

THE LM ARCHITECTURAL GROUP





A. G. PRUDEN
188 Queenston St.
Winnipeg 9

SELECTING YOUR ARCHITECT

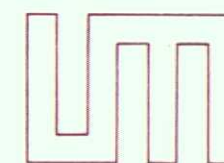
The success of any building venture depends on the selection of the architect who can best work with the client to solve his building problem. Each client entrusts to his architect the planning of a physical environment which is functional and economical — a solution which is technically and aesthetically responsive to the building problem.

A client requires a personal, professional service, which will assure that the completed project meets his building needs on time and within his budget.

Thus, it is essential that each client carefully evaluates his prospective architect on the basis of:

- A. Firm organization and capabilities
- B. Quality of personnel
- C. Firm experience
- D. Interest in the client's particular project

Only after making this assessment can he be assured of choosing the architectural firm best equipped to meet his requirements.





THE LM ARCHITECTURAL GROUP

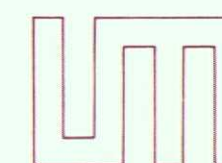
We are a full-service architectural firm, offering each client the organizational and design experience gained over the years. We have been in the practice of architecture in Winnipeg since 1954. In 1973 we changed the name of our firm from the Libling Michener Architectural Group to the LM Architectural Group.

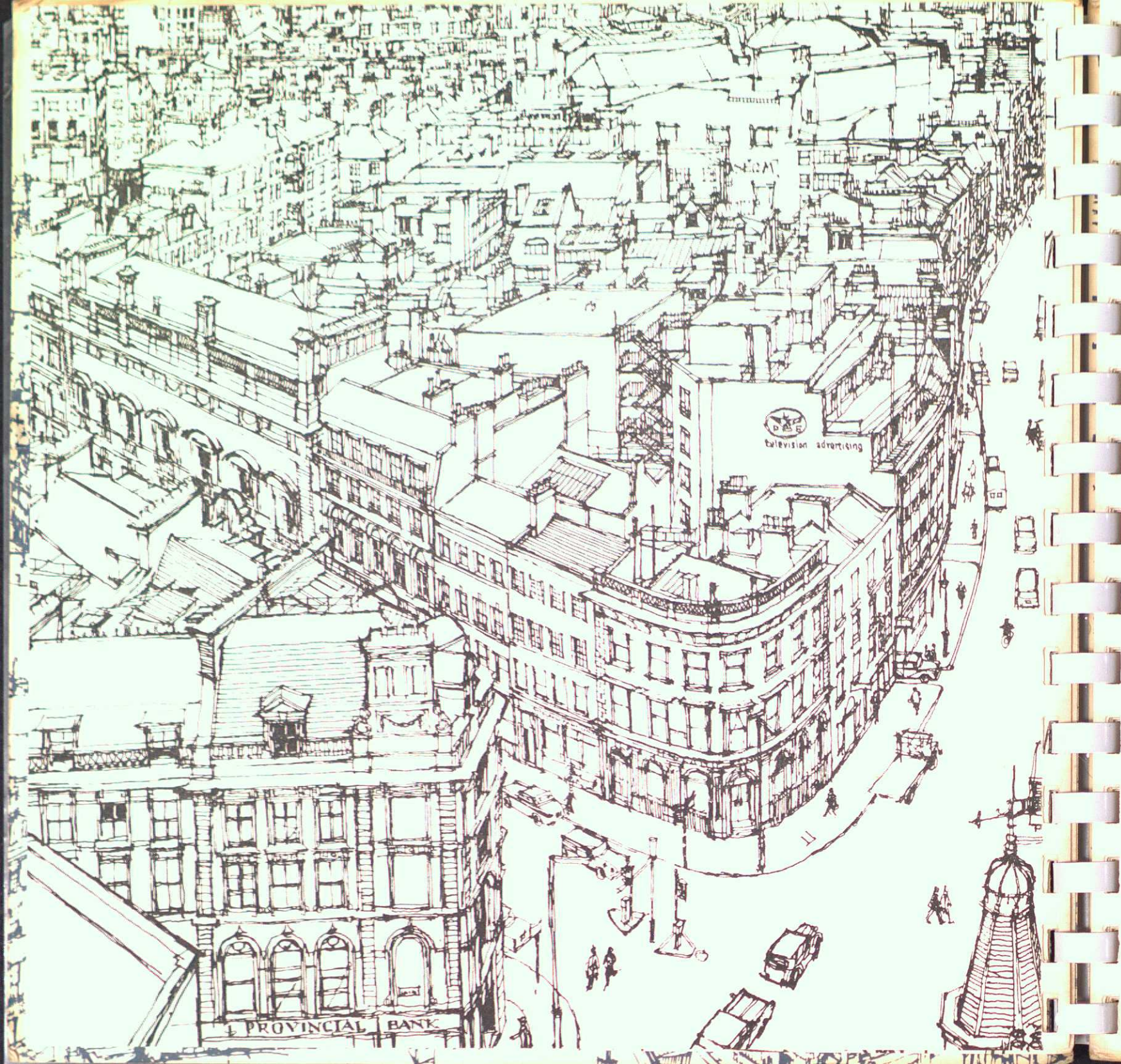
Our staff is comprised of technical specialists in architecture, urban and interior design, and construction management. This staff is supplemented by additional consultants in structural, mechanical and electrical engineering. Also engaged when required are consultants in landscape design, civil engineering, traffic, parking, marketing, management, acoustics, food facilities and elevators.

Our firm capabilities range from the conception and supervision of large government and developer projects, to solving the building problems of the private institution and businessman.

We have provided total physical design on a wide spectrum of projects that demonstrate our ability to solve specialized problems associated with specific building programs.

We offer each client a combination of imaginative design expertise, and a progressive management structure attuned to the sophisticated demands of our profession.





SERVICES

Because of our extensive resources, the LM Architectural Group is able to offer each client individual services as well as the comprehensive servicing of complete architectural projects. This is of special advantage to those who require independent reports, feasibility studies, or construction inspection services. Our services include:

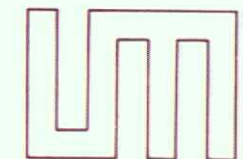
1. Feasibility Studies
2. Economic Construction Analysis
3. Site Analysis
4. Project Management
5. Project Design
 - (a) Architectural Design
 - (b) Industrial Design
 - (c) Interior Design
 - (d) Space Planning
6. Working Drawing Production
7. Construction Management
8. Construction Inspection

PERSONNEL

The successful design of any project requires more than experience in similar projects and effective organizational skills. It demands talent, it demands people who can creatively interact with their associates and the client.

Successful design requires dedicated people, contributing their individual skills to the ultimate end of an imaginative physical environment, which satisfies all the client's functional requirements.

The LM Architectural Group has such a staff. Because we have conscientiously recruited the highest calibre of professional and technical personnel, we can offer each client the skilled human resources needed to assure that all the client's needs are fully met.





OFFICE ORGANIZATION

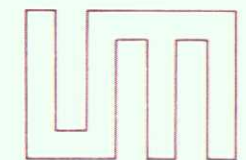
To provide each client with a personal service, the LM Architectural Group has developed a structure that utilizes the most modern management techniques as adapted to a progressive architectural practice.

Each project is analyzed in regard to the most effective project organization to meet the client's needs. A project architect is selected whose sole responsibility is to the project. He draws together a project team of specialists from each contributing discipline. The inter-disciplinary team work under a project architect assures continuity of design concept as it passes through its various levels of development, right through to the completion of construction. It also assures that the client receives the full spectrum of the LM Architectural Group's creative and technical services within tightly controlled fiscal and time budgets.

Working with the project architect on each project is a partner in charge who assists and advises the project architect in regard to development of the management plan, the design concept and the control of the quality of professional services.

All client decisions and architect's recommendations are fully documented so that all parties contributing to the work are continually up-to-date on the client's needs and design intention.

Good organization alone is not sufficient to produce good architecture, but it is impossible to produce good architecture without it.





AWARDS

As a measure of the success we have had in meeting our client's total requirements, the LM Architectural Group has been singularly honoured by our profession to receive the following awards:

4 MASSEY SILVER MEDALS FOR ARCHITECTURE

Executive House Apartments, Winnipeg, Manitoba

Chapel St. Louis Le Roi, Winnipeg, Manitoba

City of Winnipeg Hydro Electric System, Sub-Station No. 21, Winnipeg, Manitoba

St. Paul's College High School, Winnipeg, Manitoba

8 CANADIAN HOUSING DESIGN COUNCIL AWARDS

Executive House Apartments, Winnipeg, Manitoba

Southwood Village, Townhouse Development, Winnipeg, Manitoba

6 Awards for Developer Single Family Prototype Houses

2 NATIONAL CENTENNIAL MULTIPLE HOUSING DESIGN AWARDS

Grosvenor House Apartments, Winnipeg, Manitoba

Village West, Townhouse Development, Winnipeg, Manitoba

STRUCTURAL STEEL AWARD, NATIONAL DESIGN COUNCIL

Faculty of Education Building, University of Manitoba, Winnipeg, Manitoba

AWARD OF EXCELLENCE — HONOUR AWARD PROGRAM — MANITOBA ASSOCIATION OF ARCHITECTS

McMaster House
Manitoba Teachers' Society
Winnipeg, Manitoba

12 HONOURABLE MENTIONS, MASSEY AWARDS FOR ARCHITECTURE

Tache Primary School, Winnipeg, Manitoba

Warren Grade School
Warren, Manitoba

St. John Brebeuf Parish School, Winnipeg, Manitoba

McMaster House
Manitoba Teachers' Society
Winnipeg, Manitoba

Penthouse Towers, Winnipeg, Manitoba

William Morton Collegiate, Gladstone, Manitoba

Manitoba Health Services Commission, Winnipeg, Manitoba

East Kildonan Refuse Disposal Plant, Winnipeg, Manitoba

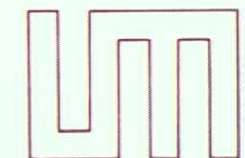
Grosvenor House Apartments, Winnipeg, Manitoba

Faculty of Education Building, University of Manitoba, Winnipeg, Manitoba

St. Eugene Church, Winnipeg, Manitoba

City of Winnipeg Public Safety Building, Winnipeg, Manitoba

THIRD PRIZE — WINNIPEG ART GALLERY COMPETITION

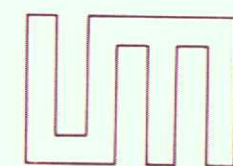


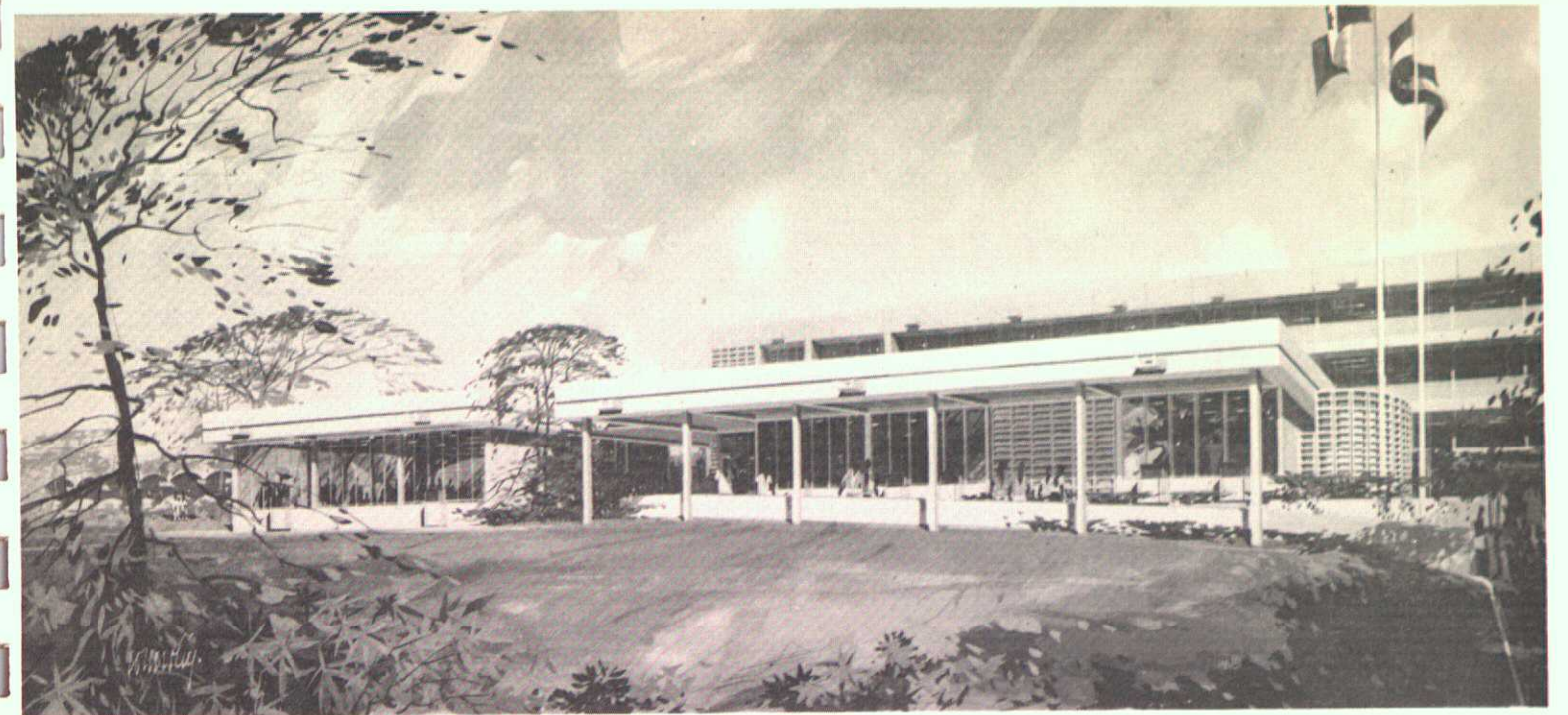


REPRESENTATIVE PROJECTS

The LM Architectural Group has been actively involved in every facet of Commercial, Institutional and Industrial Design, Elementary, Secondary and Post Secondary Schools, including technical educational complexes, Town House Developments and High Rises, Churches and Libraries, Hospitals and Nursing Homes, Corporate Offices, Shopping Centres, Urban Redevelopment and Town Planning.

The following is a representative sampling of the many projects we have been privileged to execute over the past few years for valued private and government clients.





KUMASI TECHNICAL TRAINING INSTITUTE, Kumasi, Ghana, Africa
An educational project comprising academic, residential and recreational facilities for 800 students. A joint project of the Government of Ghana and the Canadian International Development Agency.



STURGEON CREEK REGIONAL SECONDARY SCHOOL, Winnipeg, Manitoba

An educational facility where vocational and academic training are integrated to provide a varied educational experience for 1200 students. To provide complete interior planning flexibility, modular building systems have been utilized and the fixed mechanical, electrical and service elements have been located around the perimeter.



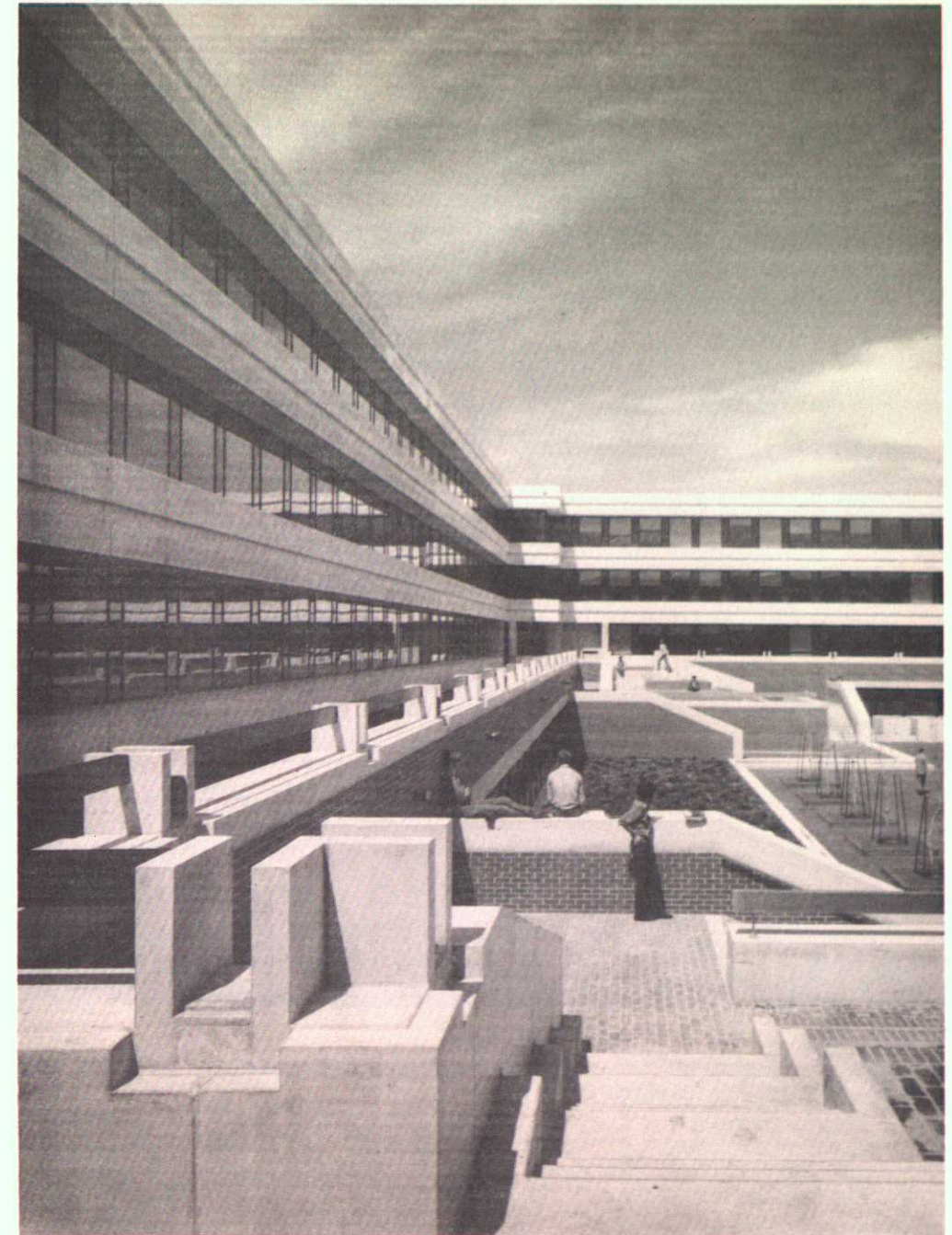
DAUPHIN REGIONAL COMPREHENSIVE SECONDARY SCHOOL, Dauphin, Manitoba

This facility for 1200 students provides an integration of vocational and academic disciplines. The demountable partitions and the mechanical and electrical systems provide for complete flexibility in planning and future change in educational programs.



RED RIVER COMMUNITY COLLEGE, Winnipeg, Manitoba

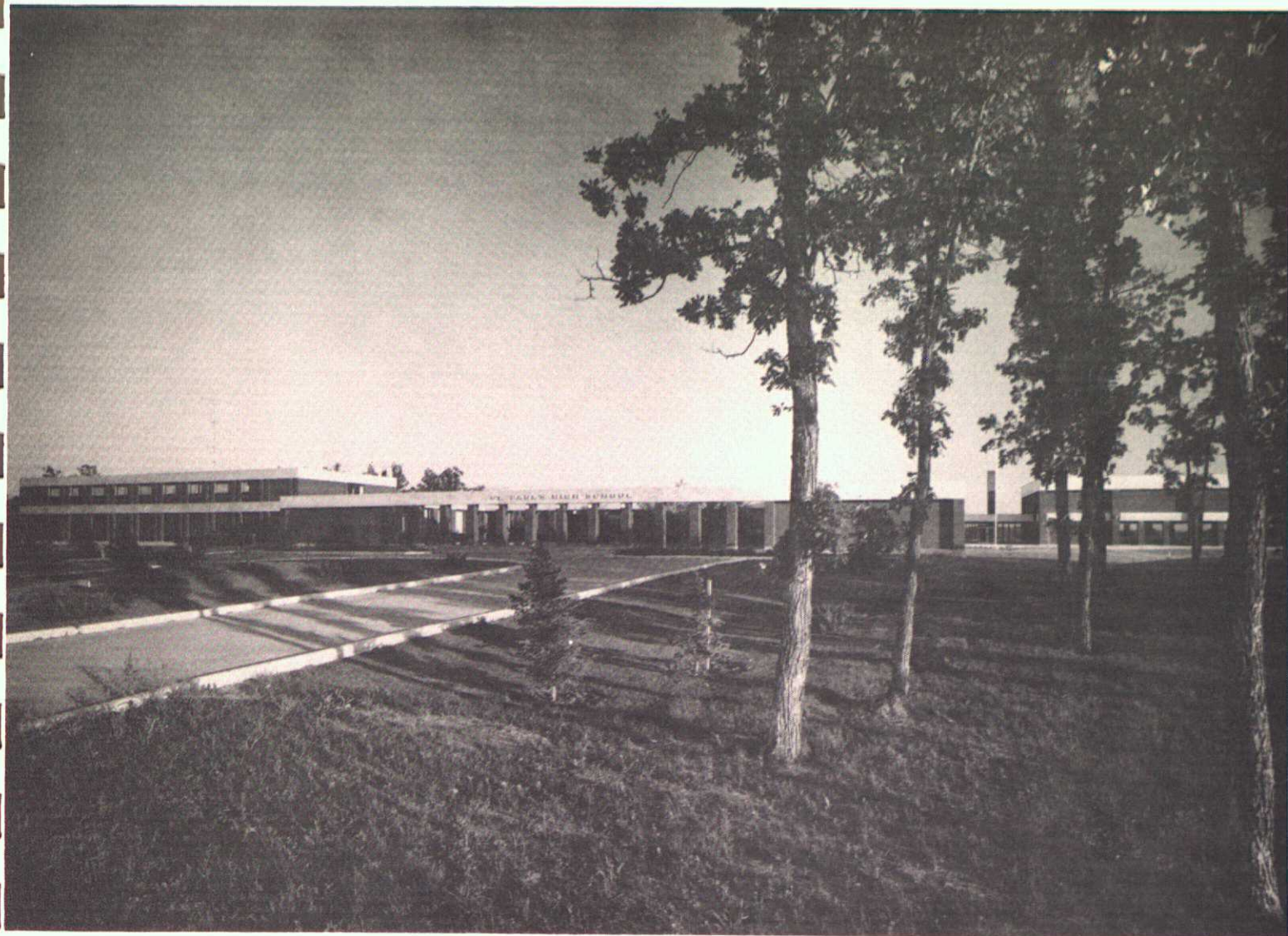
This educational complex for 3,000 students has been carefully integrated with previously existing facilities. An 8 storey administrative tower is the focal point for the complex.



RED RIVER COMMUNITY COLLEGE, Winnipeg, Manitoba
Site development and landscaping have been designed to provide both passive and active recreational areas.



GIMLI COMPOSITE HIGH SCHOOL, Gimli, Manitoba
Largest in its school division, providing training in academic,
commercial and vocational fields.



Massey Silver Medal for Architecture.

ST. PAUL'S COLLEGIATE HIGH SCHOOL, Winnipeg, Manitoba

To allow for flexibility of growth, the complex consists of 4 interlinking buildings: a main classroom block, a cafetorium (combination of auditorium and cafeteria), a gymnasium and a residence for the Jesuit Fathers. Courtyards take advantage of natural setting.



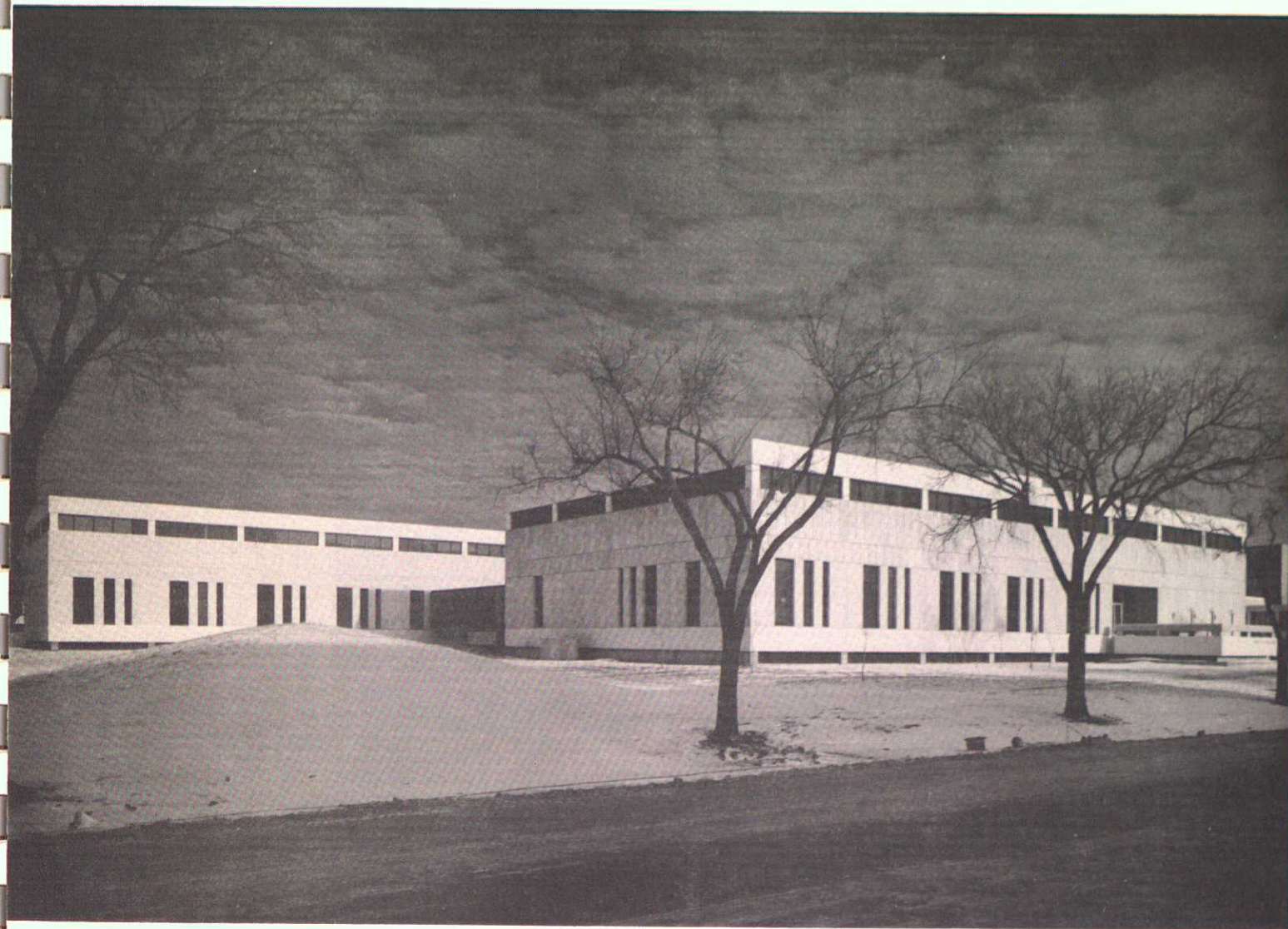
Massey Silver Medal for Architecture.

ST. PAUL'S COLLEGIATE HIGH SCHOOL — CHAPEL, Winnipeg, Manitoba

Located in the classroom building, the chapel serves the spiritual needs of the Jesuit Fathers, the school's 450 students, and the community.

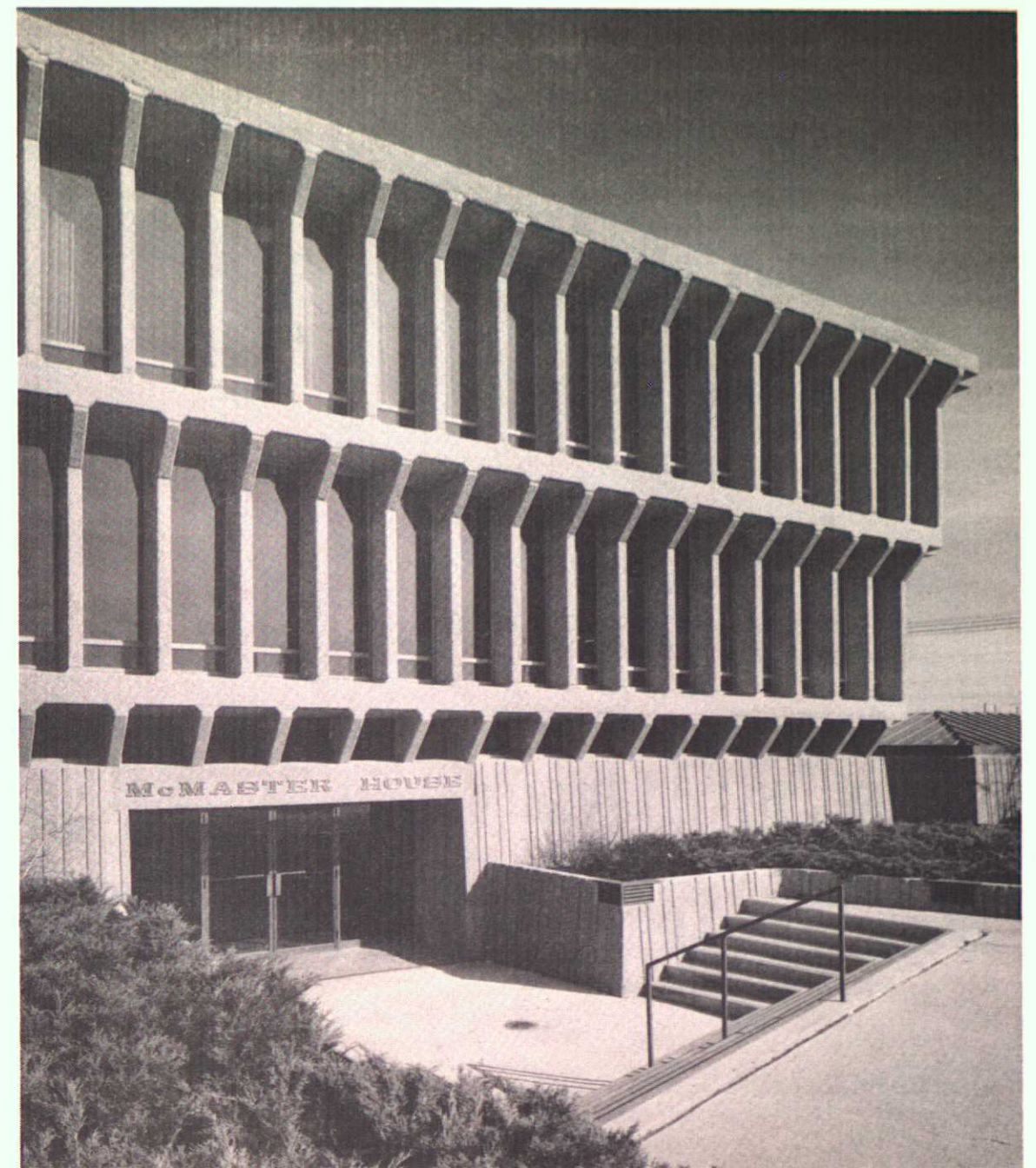


ST. MARY'S ACADEMY, Winnipeg, Manitoba
Major addition to existing facilities built in 1902 includes a cafeteria, gymnasium, library, theatre, language laboratory, art and administration facilities.

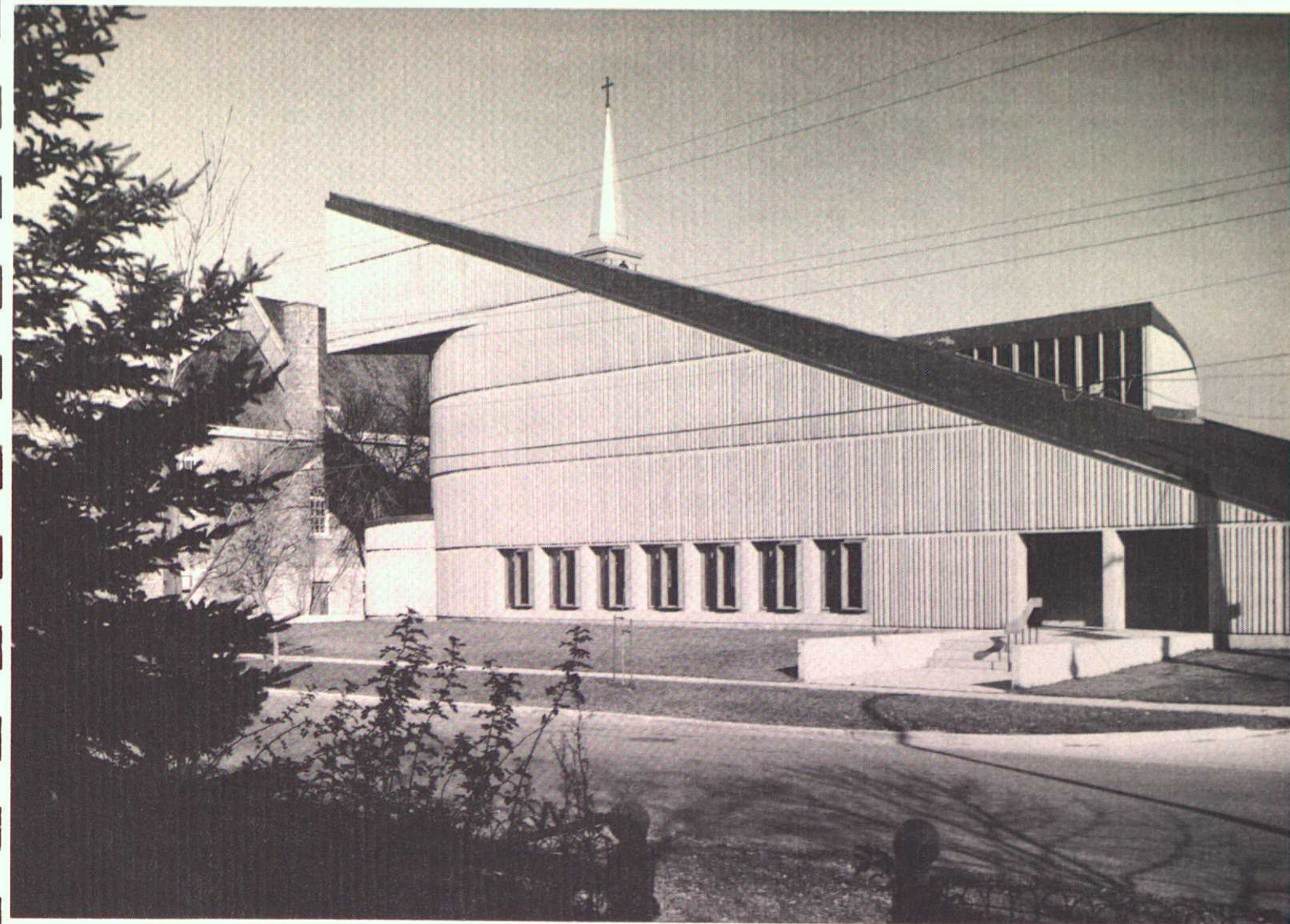


Finalist, Massey Medal Competition.
Structural Steel Award, National Design Council.

FACULTY OF EDUCATION BUILDING, UNIVERSITY OF MANITOBA, Winnipeg, Manitoba
Incorporated in the complex are a two-storey high commons area, two theatres, an audio-visual library, language labs and a central courtyard for outdoor activities.

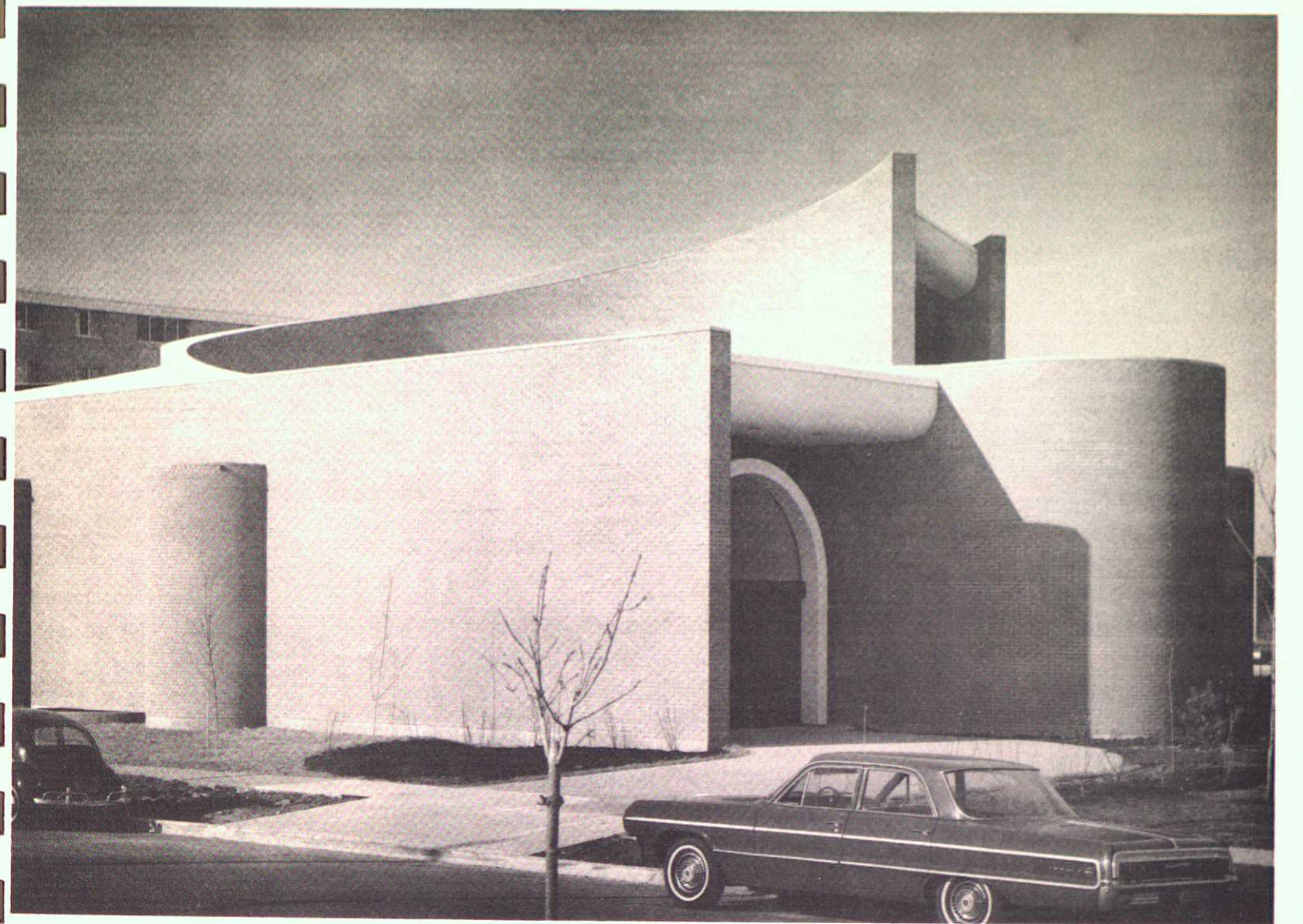


Finalist, Massey Medal Competition
 Award of Excellence — Manitoba Association of Architects
McMASTER HOUSE, MANITOBA TEACHERS' SOCIETY, Winnipeg, Manitoba
 This three storey building, with provision for two additional floors,
 contains administrative offices as well as a 350 seat sub-dividable
 auditorium. It has an architectural concrete exterior.

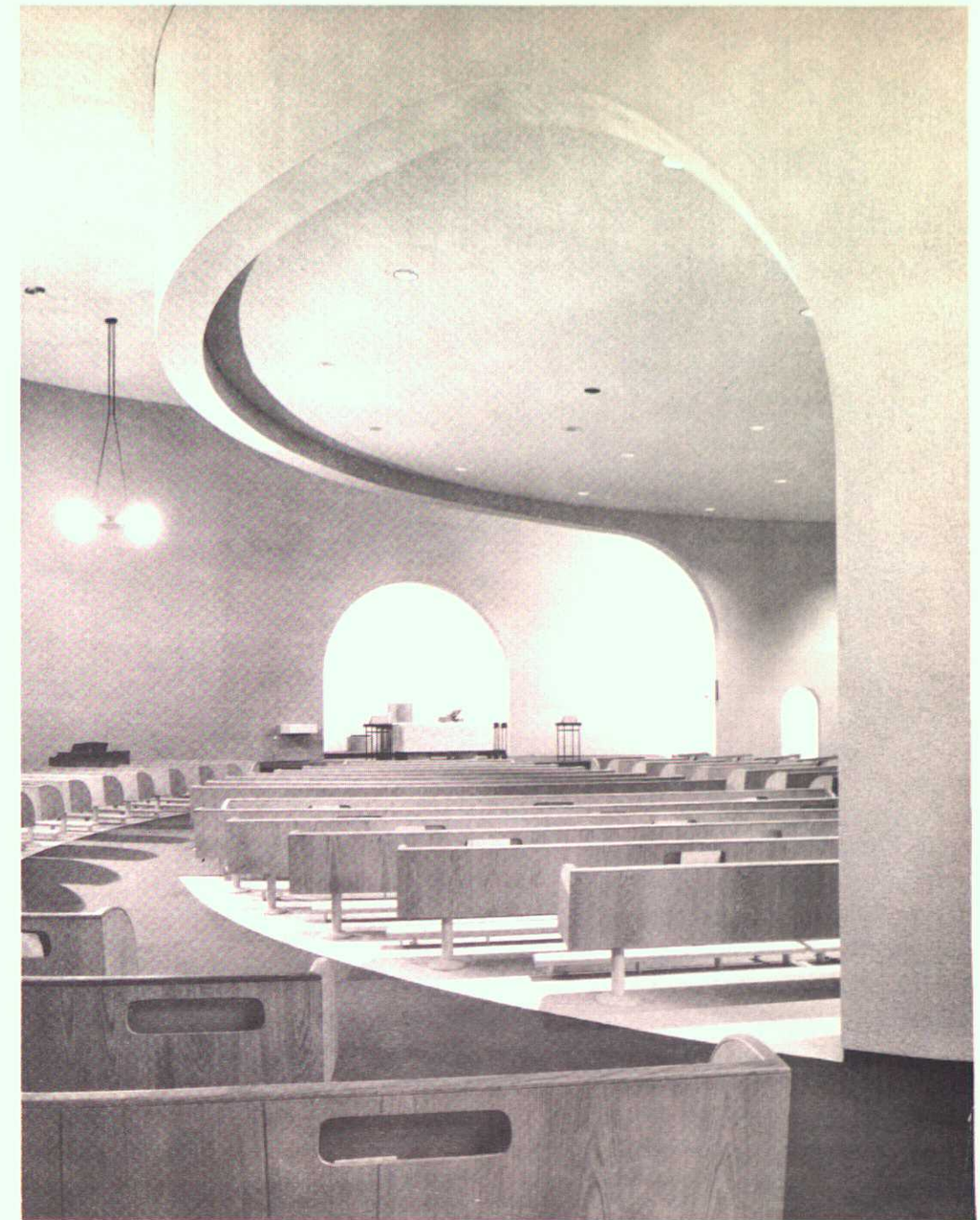


ST. JOHN CANTIUS CHURCH, Winnipeg, Manitoba

A 500 seat church, parish hall, and rectory for the Polish National Catholic Parish. The pews are in semi-circular rows around the altar providing greater involvement of the congregation in the liturgy. The main diagonal axis, expressed by the tilted peak roof form, provides a visual focus towards the altar.



ST. JOHN BREBEUF PARISH CHURCH, Winnipeg, Manitoba
Unbroken brick exterior walls shut out the exterior world,
focusing attention on the two welcoming vaulted entrances.



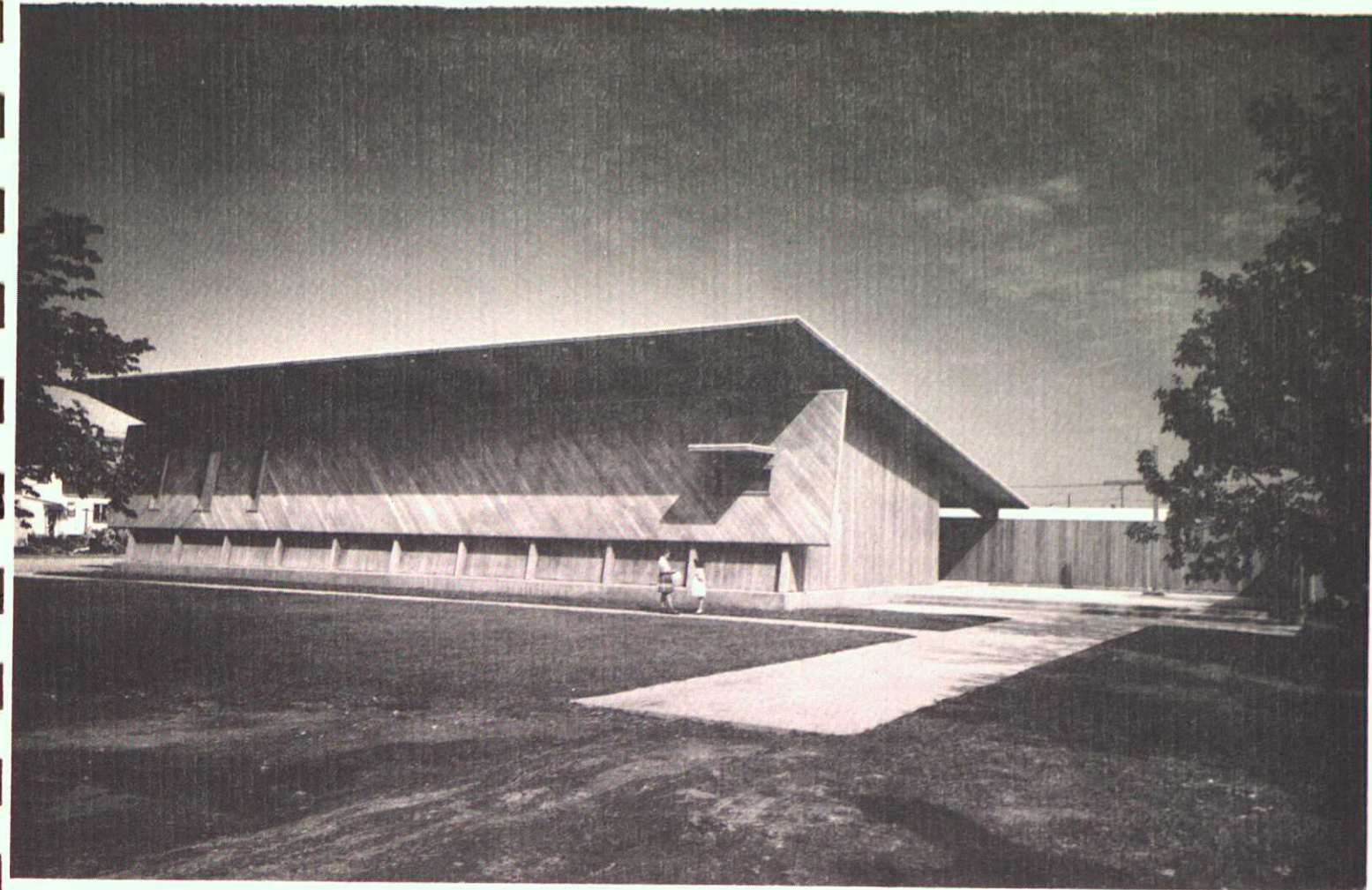
ST. JOHN BREBEUF PARISH CHURCH — INTERIOR, Winnipeg, Manitoba
To emphasize oneness of priest and congregation, the main seating area was shortened and curved around the sanctuary, and the communion rail, traditional division between sanctuary and nave, omitted.



Finalist, Massey Medal Competition.

ST. EUGENE CHURCH, Winnipeg, Manitoba

Roman Catholic Parish Church, where the Nave accommodating 400 and the Sanctuary are conceived as one room in which the character of the separate areas is modified by quality of daylight provided.



Massey Silver Medal for Architecture.

CHAPEL ST. LOUIS LE ROI, Winnipeg, Manitoba

Although located near the business section, the peculiarities of site and religious surroundings suggested a rural design treatment. Walls are of clear cedar, roof is exposed structural fir.



SANDY LAKE NURSING HOME, Sandy Lake, Manitoba
A 36 bed personal care home providing light and heavy nursing care for residents of the area.

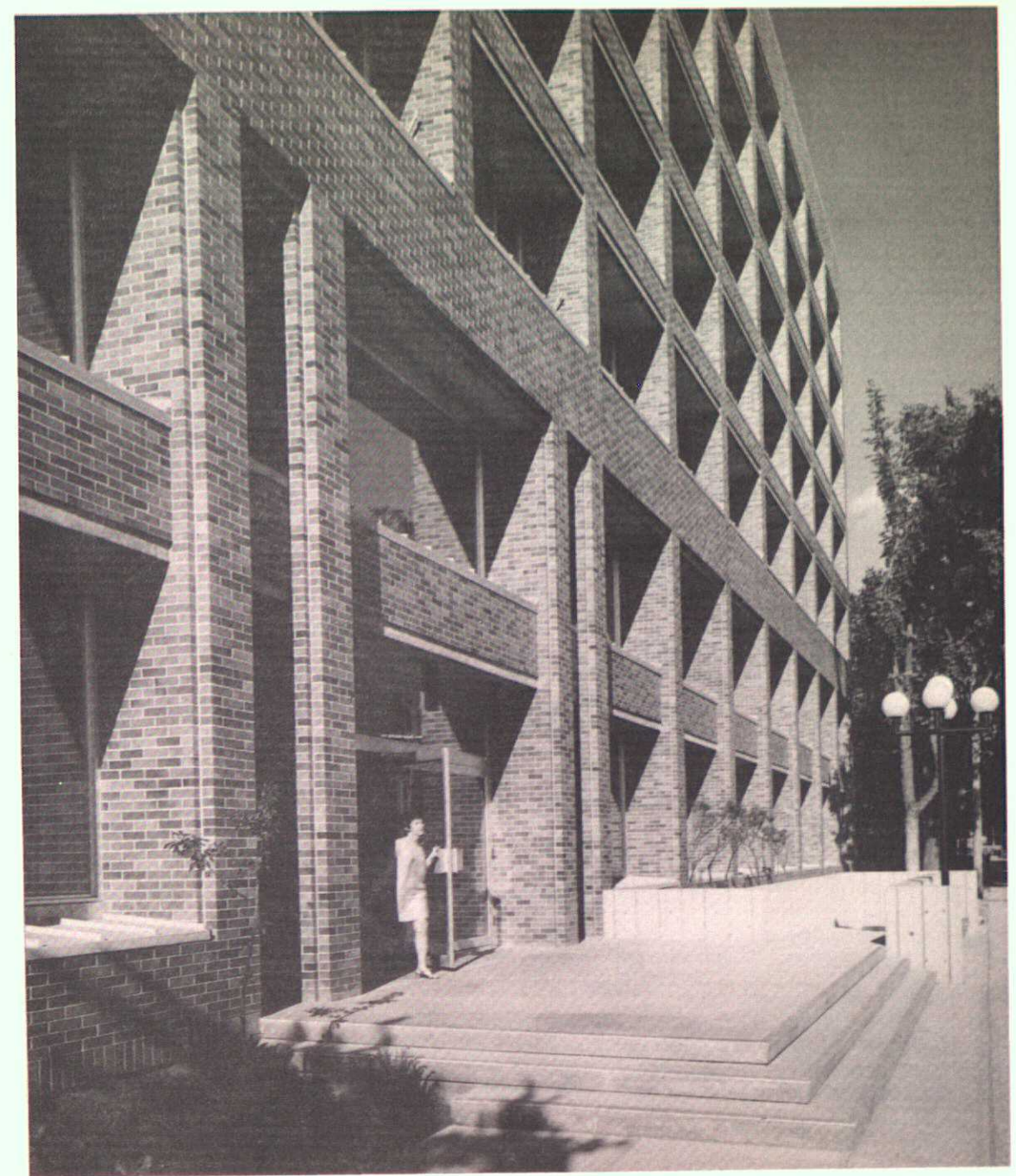


WEST PARK MANOR, Winnipeg, Manitoba
This personal care home for the Seventh Day
Adventist Church contains 150 beds.



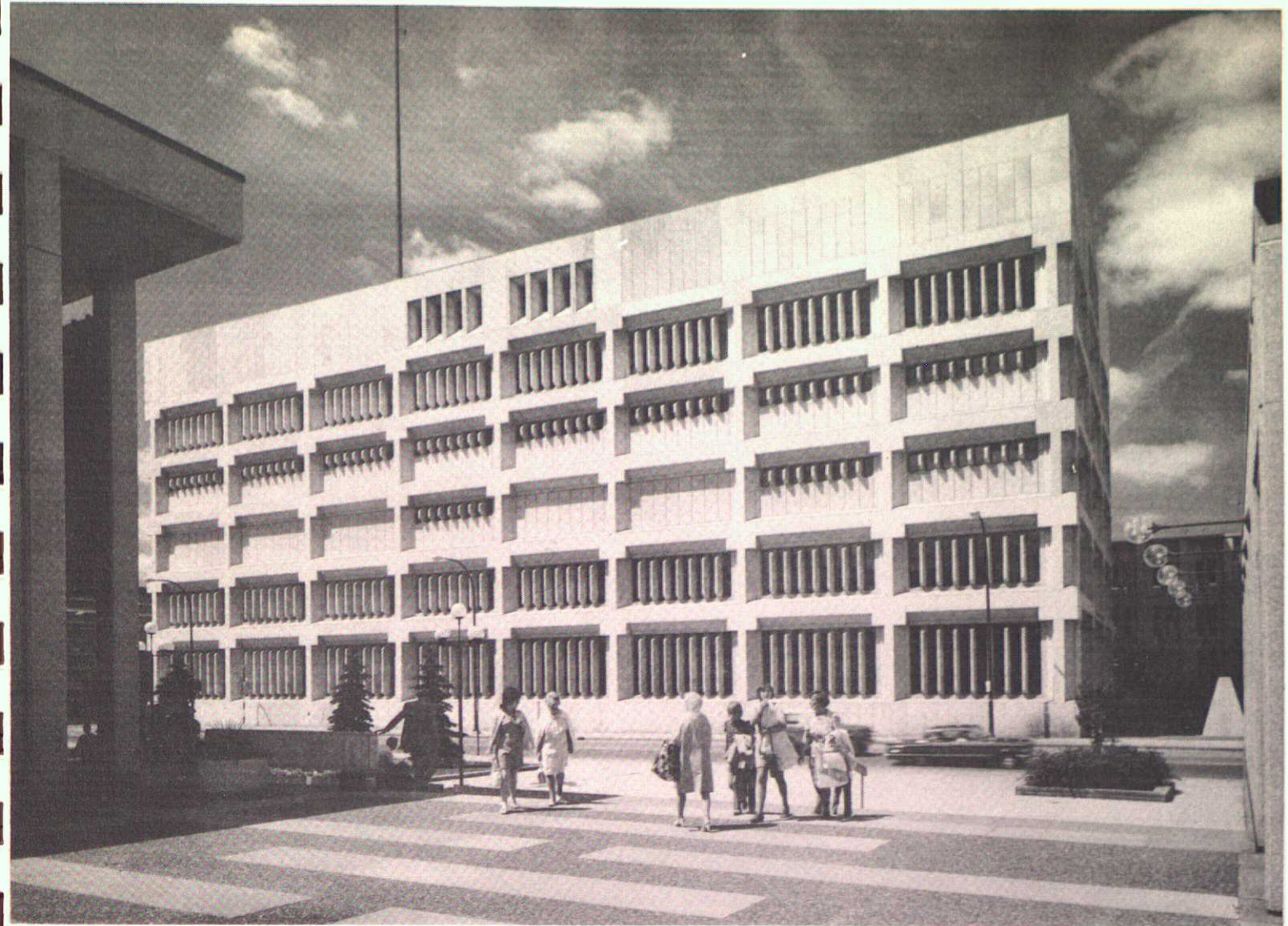
VICTORIA GENERAL HOSPITAL, Winnipeg, Manitoba

A 254 bed hospital containing many medical design innovations.
Through the imaginative use of bright colors in the interior
a cheery atmosphere has been created.



Y.W.C.A., Winnipeg, Manitoba

This residential facility for the Young Women's Christian Association consists of 5 floors of bedrooms, as well as dining and lounge facilities, administration offices, meeting rooms, indoor swimming pool and gymnasium.



PUBLIC SAFETY BUILDING, Winnipeg, Manitoba

Clad with precast concrete panels faced with typical limestone, this 6 storey building contains administrative headquarters for police and fire departments as well as magistrates' courts, jail and traffic control and emergency communications systems.

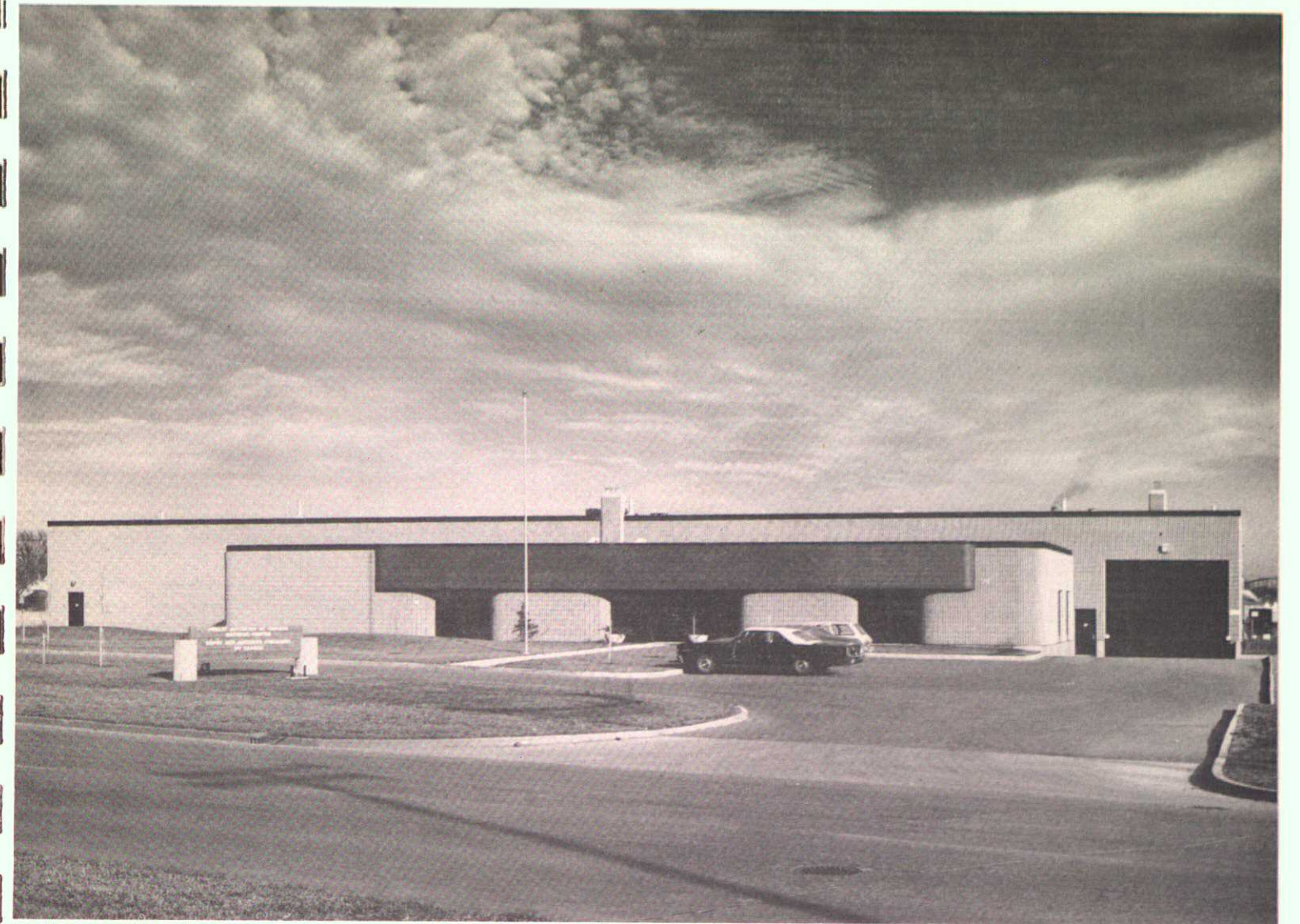


MANITOBA HEALTH SERVICES COMMISSION, Winnipeg, Manitoba
Head office facilities for the
Provincial Health Services Commission.



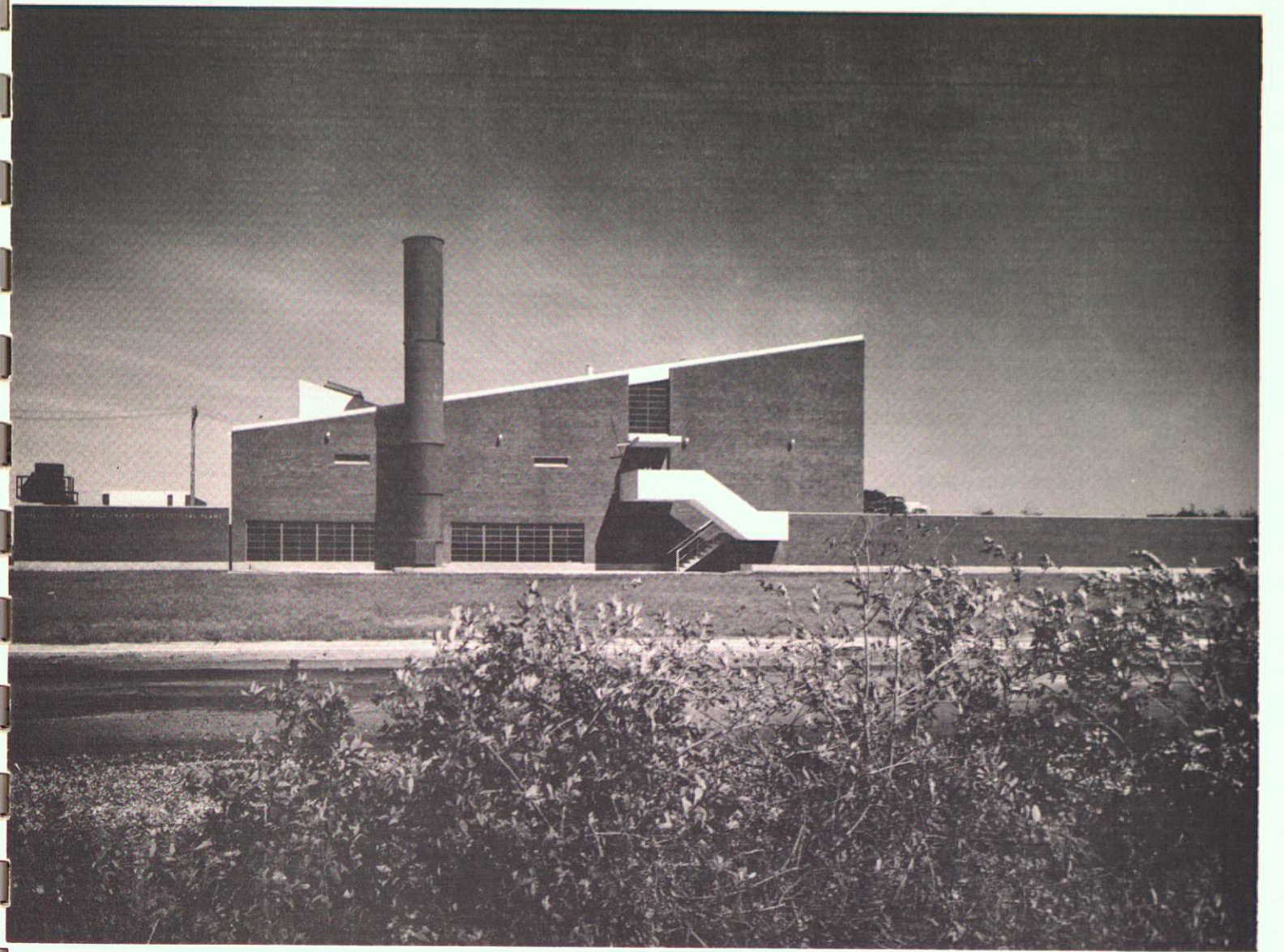
KENORA FEDERAL BUILDING, Kenora, Ontario

This government building contains the post office and other agencies of the Federal Government in the Kenora district. A 2 storey high lobby provides a dramatic entrance.



PUBLIC ARCHIVES OF CANADA RECORDS CENTRE, Winnipeg, Manitoba

A 43,000 sq. ft. (4,000 m²) records storage building
where cleanliness and security are of prime importance.



Finalist, Massey Medal Competition.

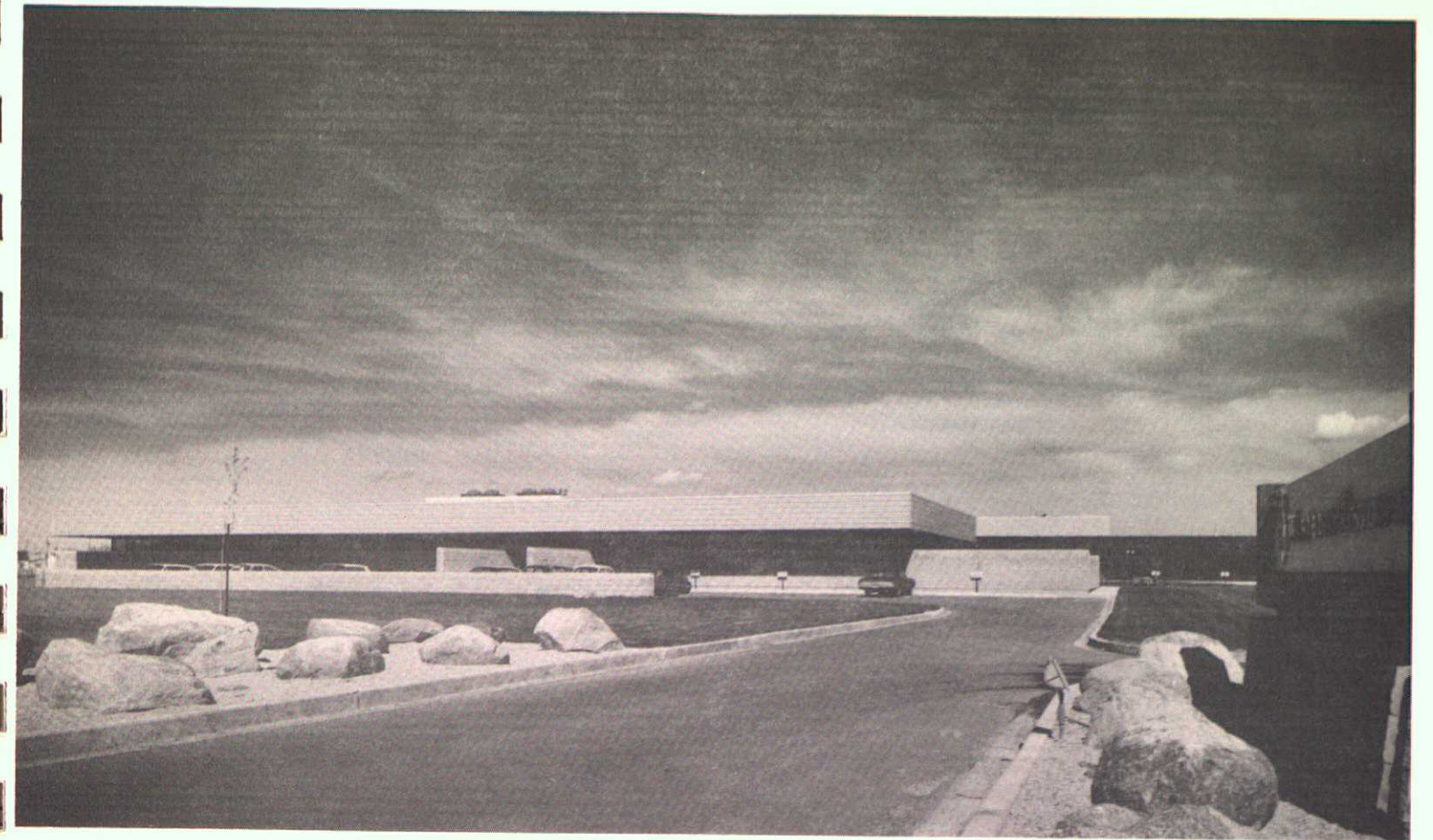
EAST KILDONAN REFUSE DISPOSAL PLANT, Winnipeg, Manitoba

Objective was to achieve the efficiency of an industrial building, the scale of a residential building, and the permanence of a civic structure.



WINNIPEG PHOTO, Winnipeg, Manitoba

Corporate office and processing plant of 40,000 sq. ft. (3,700 m²).
Second storey contains chemical mixing facilities which gravity-feed
to the processing machines below.



WESTFAIR FOODS OFFICE AND WAREHOUSE, Winnipeg, Manitoba

This food distribution facility consists of a 36,500 sq. ft. (3,400 m²) office building and a 150,000 sq. ft. (14,000 m²) warehouse. A large roof overhang on the office building controls sunlight.



BOEING OF CANADA LTD. PLANT AND OFFICES, Winnipeg, Manitoba
Designed to meet the exacting requirements for the manufacturing of structural fibreglass airplane assemblies, this 80,000 sq. ft. (7,400 m²) plant includes high-level lighting, strict temperature, humidity and dust controls, and a 100 ton autoclave. The building design and landscaped grounds have established a high quality industrial area.



CANADIAN MOTORWAYS TRUCKING COMPLEX, Winnipeg, Manitoba

One of the largest and most modern integrated trucking centres in Canada, this complex includes head offices, truck maintenance and warehouse facilities with a total area of 138,000 sq. ft. (12,800 m²).



CITY CENTRE MALL, Thompson, Manitoba

The first shopping centre developed and owned by the F. W. Woolworth Co. Ltd., this 180,000 sq. ft. (16,740 m²) complex includes a large department store, a food store, and 25 specialty shops. The enclosed mall includes a town square, complete with fountain and used for community activities.



LORD SELKIRK PARK, Winnipeg, Manitoba
This major residential development contains rowhouses, maisonettes and apartments.



National Centennial Multiple Housing Design Award, Canadian Housing Design Council.

VILLAGE WEST, Winnipeg, Manitoba

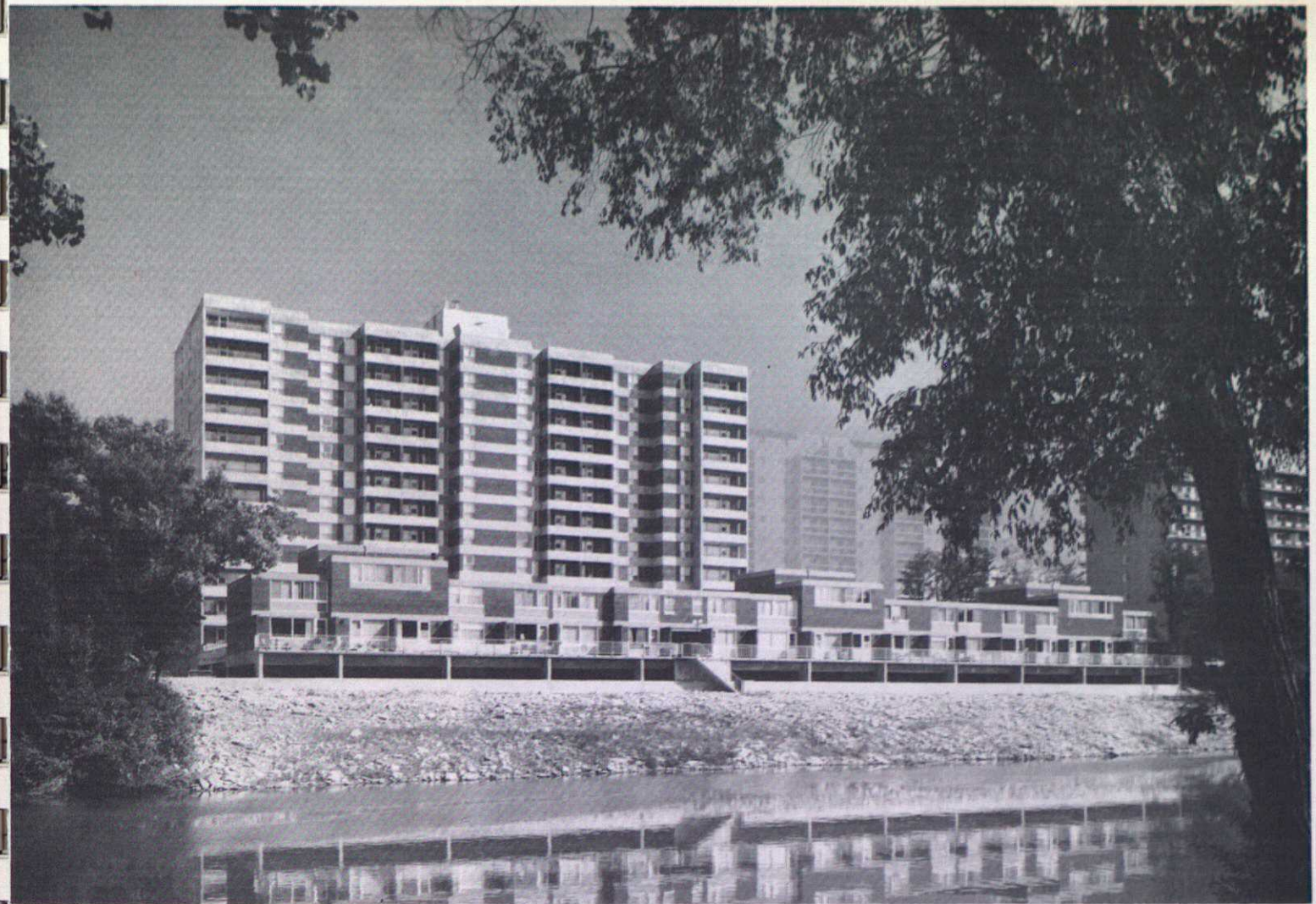
First consolidated townhouse development in Winnipeg.
Grouped in clusters focused on a major landscaped entry court,
all units have a front yard and a privately fenced rear terrace
overlooked by a 1½ storey living room.



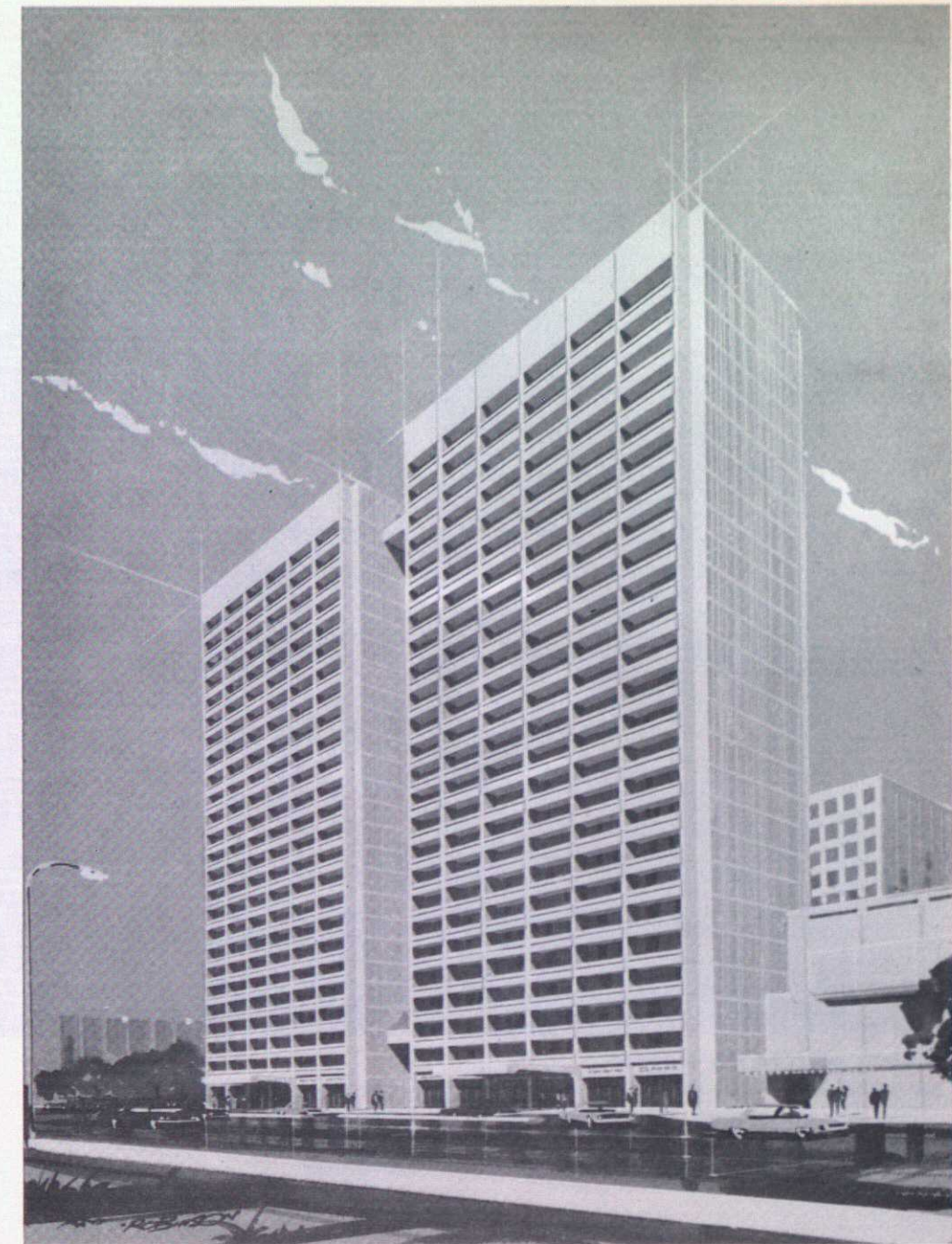
Canadian Housing Design Council Award,
SOUTHWOOD VILLAGE, Winnipeg, Manitoba
Pedestrian oriented 98 unit townhouse development.
Parking was placed underground, and earth fill utilized to mould
the site in a "bowl" shape. This created a series of internal
landscaped walks which meander through staggered rows of townhouses,
placed to create changing vistas of the central park.



Finalist, Massey Medal Competition.
National Centennial Multiple Housing Design Award, Canadian Housing Design Council.
GROSVENOR HOUSE APARTMENTS, Winnipeg, Manitoba
A 33 unit apartment building. The architectural expression was determined by
use of structural precast concrete and its explicit joinery.



CANTERBURY HOUSE APARTMENTS, Winnipeg, Manitoba
A twelve-storey, 142 suite apartment building on the bank of the Assiniboine, with indoor swimming pool. The main building is complemented by nineteen 2 and 3 bedroom townhouses with riverbank terraces.

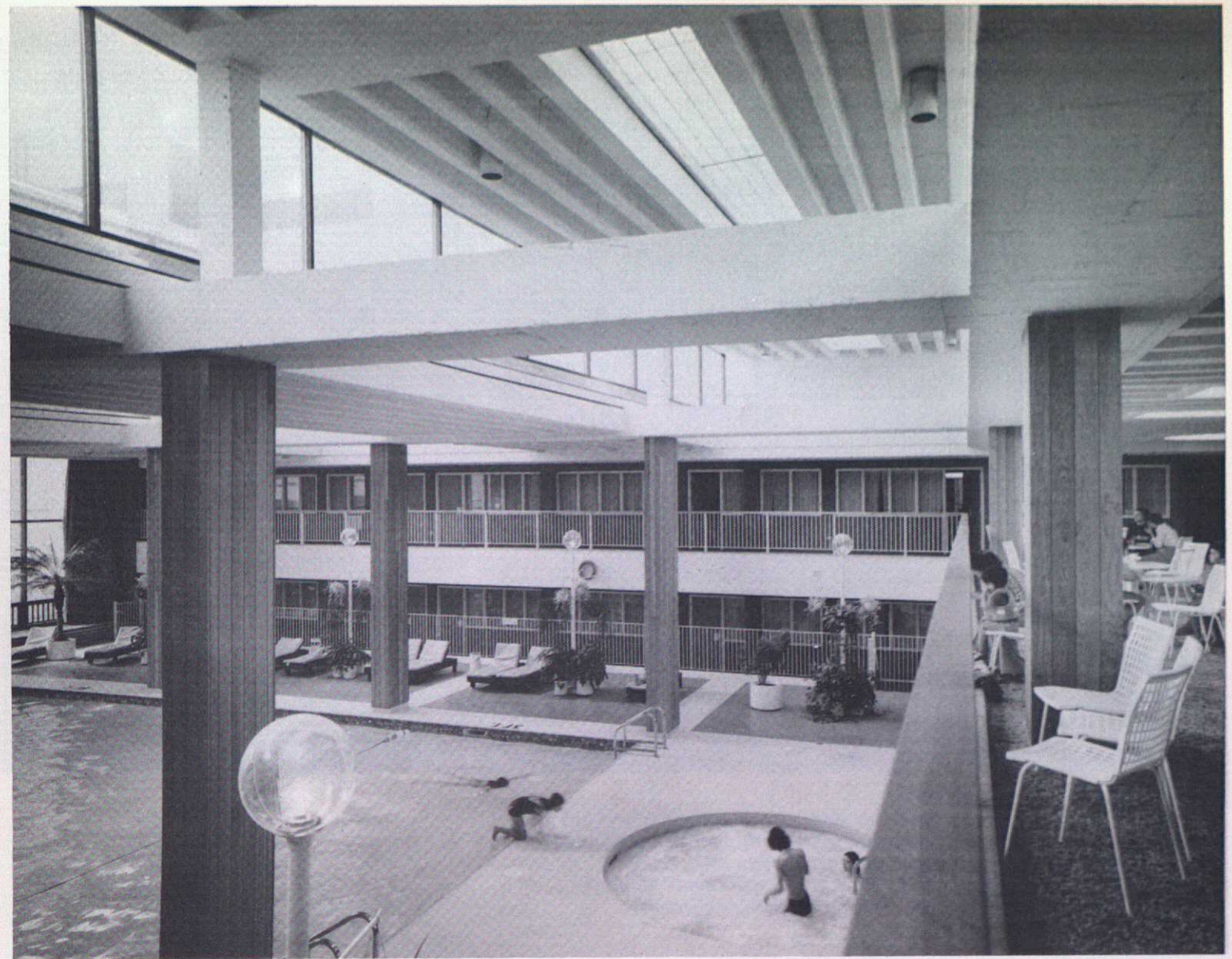


HOLIDAY TOWER NORTH AND HOLIDAY TOWER SOUTH, Winnipeg, Manitoba
Part of the large integrated complex in downtown Winnipeg known as Lakeview Square, these 2 apartment buildings are 26 storeys and contain a total of 510 suites, and are connected by 2 overhead pedestrian bridges.



HOLIDAY INN, Winnipeg, Manitoba

A 411 room hotel featuring recreation facilities, shops, meeting rooms and a ballroom for up to 1500 people. It is an integral part of the Lakeview Square complex and is connected to Winnipeg's new Convention Centre by an enclosed pedestrian overpass.

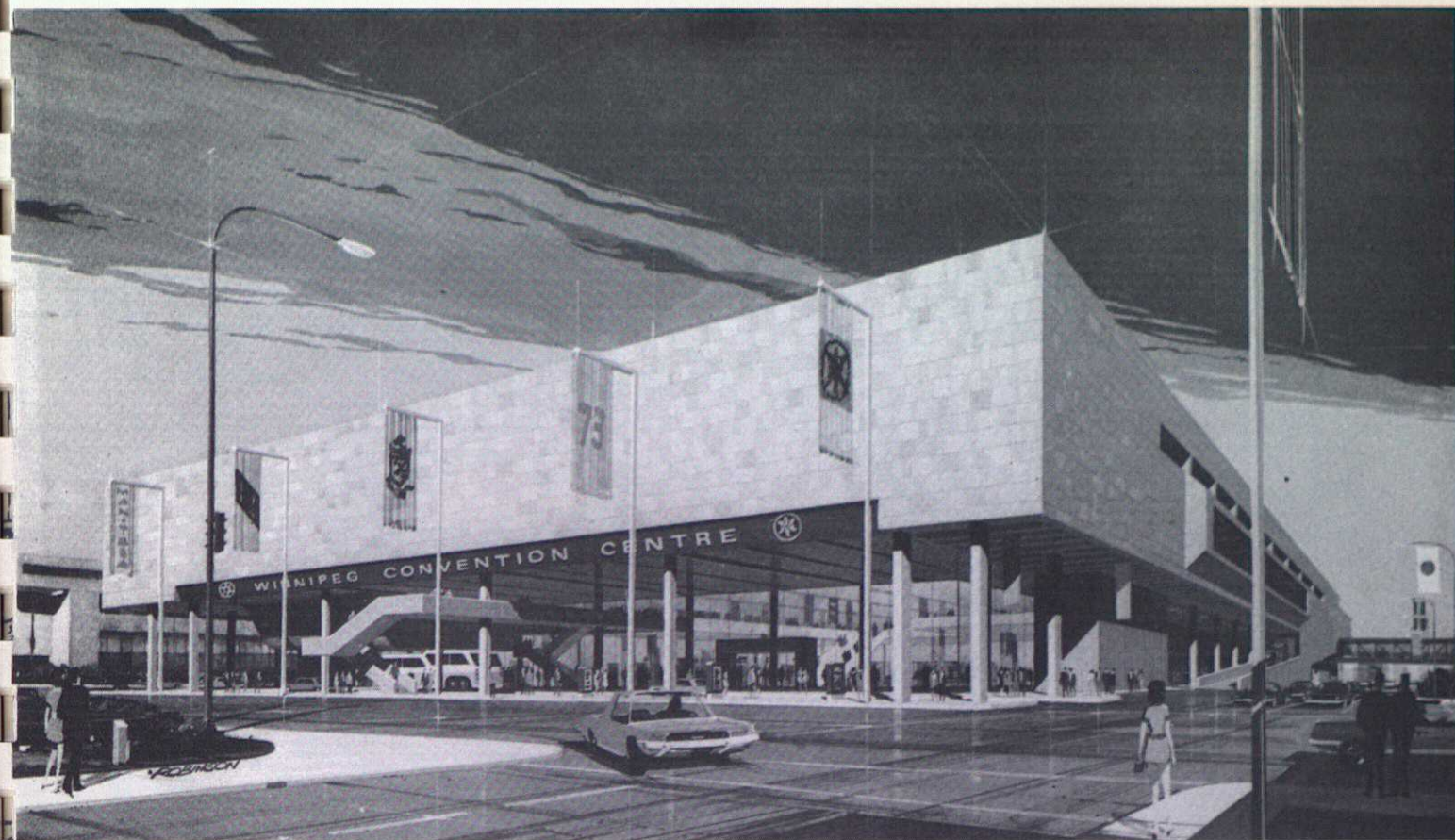


HOLIDAY INN — INTERIOR POOL, Winnipeg Manitoba
Besides an outdoor pool, this hotel features an indoor sun-lit swimming pool and recreation area.



LAKEVIEW SQUARE, Winnipeg, Manitoba

The first major urban complex implemented as per the development plan for downtown Winnipeg, this project includes 3 office buildings (One, Two and Three Lakeview Square), 2 apartment towers (Holiday Tower North and Holiday Tower South), The Holiday Inn, underground parking for 580 cars and a Japanese Garden.



WINNIPEG CONVENTION CENTRE, Winnipeg, Manitoba

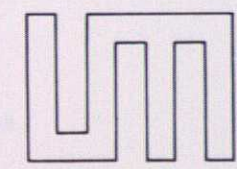
This modern convention facility contains a 78,000 sq. ft. (7,250 m²) column-free exhibition hall, as well as shops, restaurants, theatre and underground parking for 650 cars. Architectural services carried out in consortium with Number Ten Architectural Group.

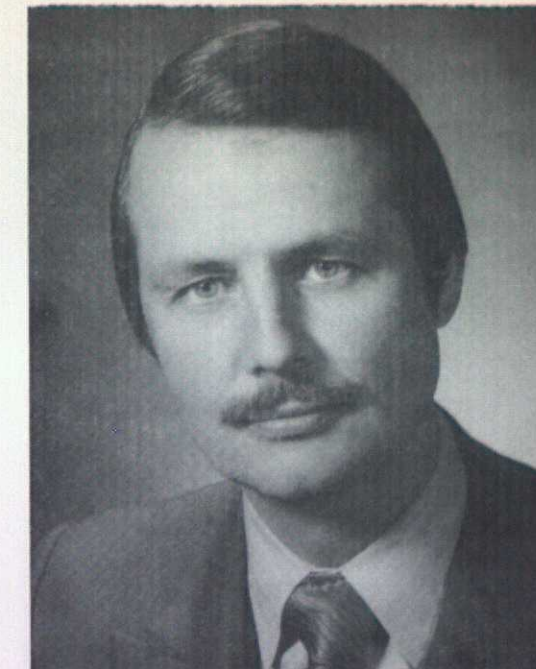


CENTENNIAL GARDENS — WINNIPEG 101, Winnipeg, Manitoba

An integrated office, shopping, recreational and residential complex including a hotel and underground parking on a site in downtown Winnipeg.

**CURRICULUM
VITAE
OF
PRINCIPALS
AND
SENIOR
PERSONNEL**





MEL P. MICHENER, F.R.A.I.C.
PRINCIPAL

PLACE OF BIRTH:

Winnipeg, Manitoba, Canada

EDUCATION:

Bachelor of Architecture, University of Manitoba – 1952

CAREER SUMMARY:

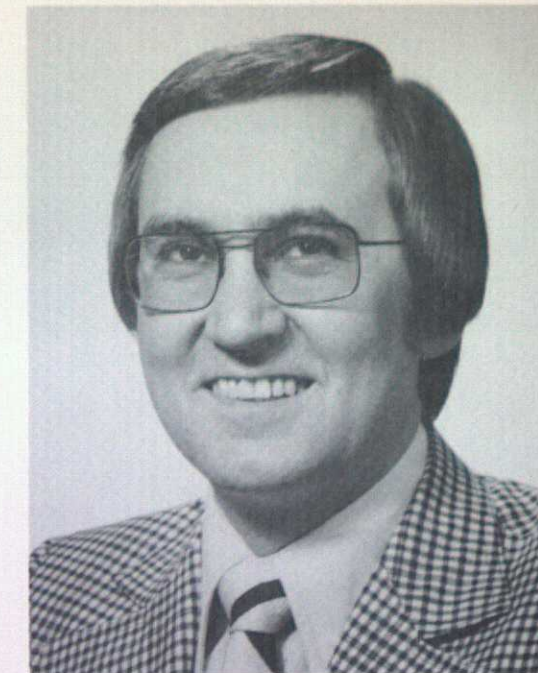
Upon graduation was employed as design architect with John B. Parkin Associates in Toronto. Returned to Winnipeg as senior design architect with Smith Carter Katelnikoff, Architects. In 1954 entered into partnership to practise as Architects Libling Michener and Associates as senior partner responsible for a variety of commercial, institutional and residential projects.

MEMBER OF THE FOLLOWING:

Royal Architectural Institute of Canada
Manitoba Association of Architects
Ontario Association of Architects
Quebec Association of Architects

SIGNIFICANT APPOINTMENTS AND HONOURS:

- Member, College of Fellows, Royal Architectural Institute of Canada
- Past Member of Council, Royal Architectural Institute of Canada
- Past President, Manitoba Association of Architects
- Past President, Age and Opportunity Bureau
- Vice-President, Winnipeg Symphony Orchestra
- First Vice-President, Winnipeg Chamber of Commerce
- Member, Board of Directors, Society for Crippled Children & Adults
- Design Critic and Lecturer at the Faculty of Architecture, University of Manitoba
- Chairman, Manitoba Design Institute



RUDY P. FRIESEN, M.R.A.I.C.
PRINCIPAL

PLACE OF BIRTH:
Winnipeg, Manitoba, Canada

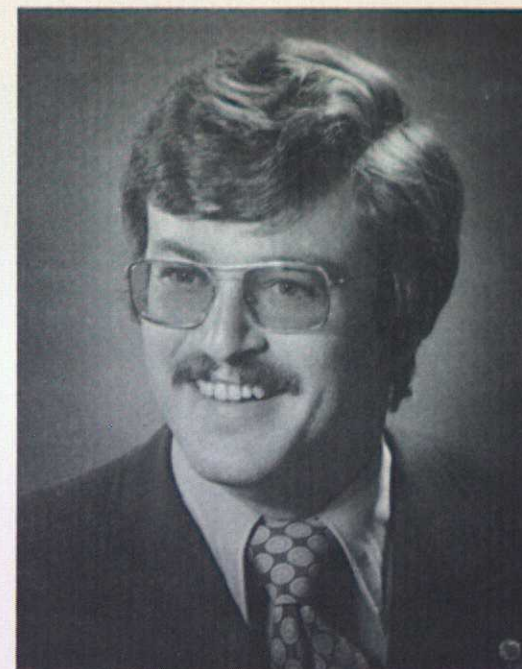
EDUCATION:
Bachelor of Architecture, University of Manitoba – 1965

CAREER SUMMARY:
Upon graduation, was employed with Smith Carter Searle and Associates, Winnipeg. In 1966–67 was employed with Ellsäßer & Keller, Stuttgart, West Germany, engaged in design and production of institutional and residential projects. Returned to Winnipeg in 1967 and joined Moody Moore & Partners as job captain. Joined Libling Michener and Associates in 1969 as job captain and project manager on institutional, commercial and residential projects. In 1971 became principal in the firm, responsible for various commercial, residential and institutional projects.

MEMBER OF THE FOLLOWING:
Royal Architectural Institute of Canada
Manitoba Association of Architects
The Guild for Religious Architecture, Affiliate of
American Institute of Architects

SIGNIFICANT APPOINTMENTS AND HONOURS:

- Winner of Canadian Small House Design Competition sponsored by Central Mortgage and Housing Corporation
- Past Secretary, Committee on Church Architecture, Conference of Mennonites in Canada, and co-author of "A Guide For Church Building" published by this Committee



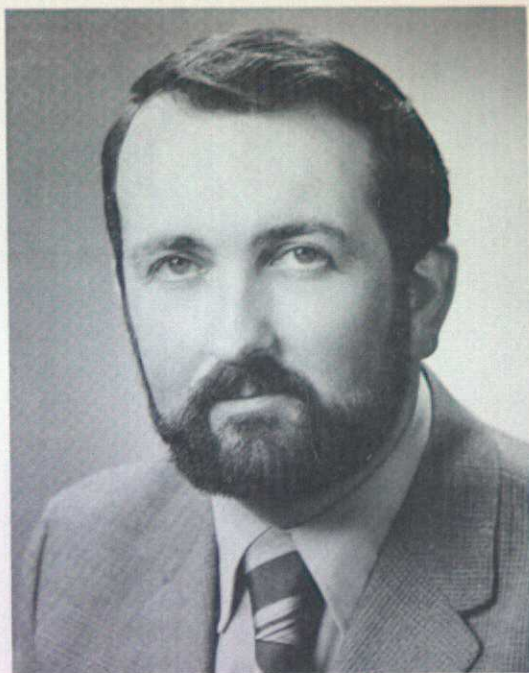
T. WAYNE KINRADE, M.R.A.I.C.
PRINCIPAL

PLACE OF BIRTH:
Winnipeg, Manitoba, Canada

EDUCATION:
Bachelor of Architecture, University of Manitoba - 1967

CAREER SUMMARY:
Upon graduation, was employed by Libling Michener and Associates as design architect on various commercial and residential projects. In 1969 became an associate, and in 1971, a principal in the firm, responsible for various industrial, commercial and residential projects.

MEMBER OF THE FOLLOWING:
Royal Architectural Institute of Canada
Manitoba Association of Architects



JOHN D. JAMES, T.I.O.B.
PRINCIPAL

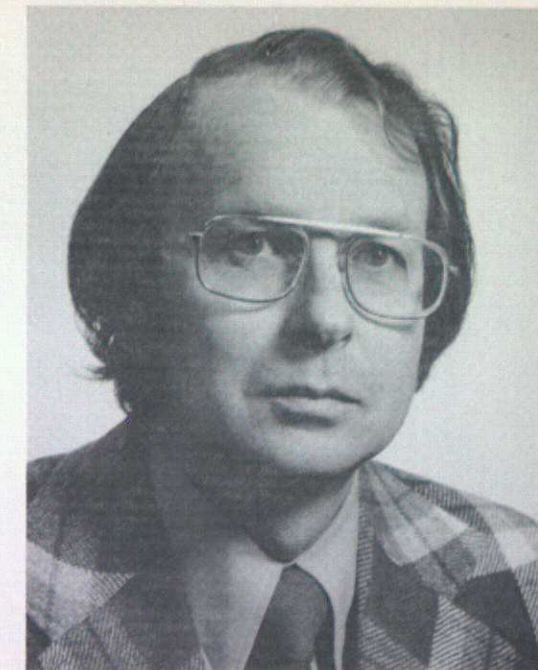
PLACE OF BIRTH:
Edinburgh, Scotland

EDUCATION:
Heriot Watt University, Edinburgh, Scotland - 1959

CAREER SUMMARY:
Joined Green Blankstein Russel Associates in Winnipeg in 1959 where he was employed as job captain on major hospital projects. Employed by Libling Michener and Associates in 1965 as project manager on major hospital projects. Became an associate in 1967 and a senior associate in 1969 of Libling Michener and Associates. Since 1971 has been a principal in the firm with prime responsibility for all aspects of health and social care facilities. Has also been responsible for a variety of commercial, residential and institutional projects.

MEMBER OF THE FOLLOWING:
Member of Institute of Building, London, England

- SIGNIFICANT APPOINTMENTS:**
- Member of the National Advisory Body to the Space Function Cost Analysis Project, Health Facilities Design Directorate, Department of Health and Welfare, Ottawa
 - Member of the Architectural Advisory Committee of Red River Community College



WALLACE E. SHERRIFF, M.R.A.I.C.
PRINCIPAL AND SENIOR DESIGNER

PLACE OF BIRTH:
Toronto, Ontario, Canada

EDUCATION:
Bachelor of Architecture, University of Toronto – 1956
Master of Architecture, Yale University – 1961

CAREER SUMMARY:
Employed with Craig Madill Abram Ingleson from 1955. In 1958 joined John B. Parkin Associates as project manager and project designer. In 1960 took post graduate studies at Yale University under Paul Rudolph. Also was employed as designer in the office of Paul Rudolph, New Haven, Connecticut. Rejoined John B. Parkin Associates in 1961 as senior designer responsible for a variety of institutional, commercial and industrial projects. Entered private practice in Toronto in 1965 and successfully completed a variety of commercial, institutional and residential projects. Joined the firm in 1971 as senior design architect. Has been a principal since 1975, with prime responsibility for design quality.

MEMBER OF THE FOLLOWING:
Royal Architectural Institute of Canada
Manitoba Association of Architects

- SIGNIFICANT APPOINTMENTS AND HONOURS:**
- Design Critic, School of Architecture, University of Toronto, 1965–1967
 - Design Critic at the Faculty of Architecture, University of Manitoba, 1972
 - Yale School of Art and Architecture Scholarship 1960 (First Canadian architect to win this honour)
 - 1 Massey Medal and 2 Massey Medal Finalists for projects designed during employment at John B. Parkin & Associates
 - 2 Honourable Mentions in Architectural Competitions during private practice



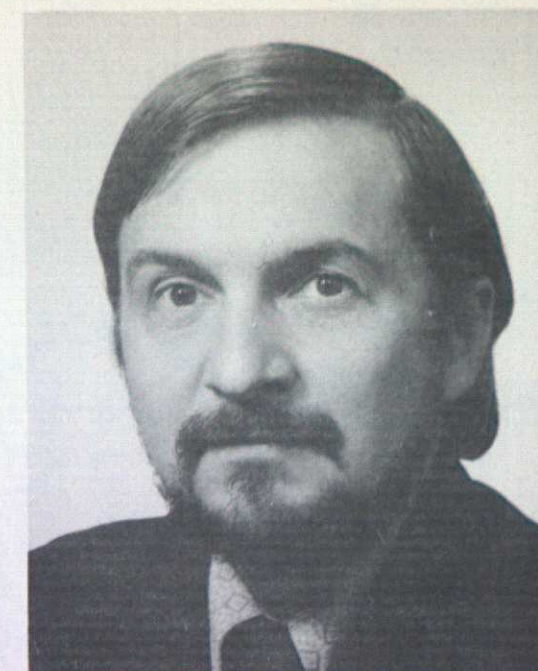
MICHAEL W. SOKULSKI, M.R.A.I.C.
SENIOR PROJECT ARCHITECT

PLACE OF BIRTH:
Winnipeg, Manitoba, Canada

EDUCATION:
Bachelor of Architecture, University of Manitoba - 1969

CAREER SUMMARY:
Employed by Leslie R. Fairn Architects, Halifax, N.S., as designer in Kingston, Jamaica in 1968. In 1969 upon graduation, joined Lipson & Dashkin Architects, Toronto as designer and job captain. He was subsequently employed by J & J Brook Ltd. as interior space planner and designer. In 1970 joined Eugene Janiss Architects, Toronto as project architect. Employed in 1971 by Tampold & Wells Architects, Toronto, as resident associate architect in charge of Halifax office, involved in commercial, residential and institutional projects. Joined the firm as senior project architect for institutional projects in 1973.

MEMBER OF THE FOLLOWING:
Royal Architectural Institute of Canada
Manitoba Association of Architects



C. ROBERT BRISKIE, M.R.A.I.C., R.I.B.A.
SENIOR PROJECT ARCHITECT

PLACE OF BIRTH:
Winnipeg, Manitoba, Canada

EDUCATION:
Bachelor of Architecture, University of Manitoba - 1964

CAREER SUMMARY:
Upon graduation, was employed with John B. Parkin Associates, Toronto. After a year of travel joined Mathers and Haldenby, Toronto in 1967 as job captain on university and institutional buildings. Joined the firm of Finley W. McLachlan Ltd., Toronto in 1969 as design and project architect on industrial and commercial buildings. Employed in the United Kingdom with the firm of Howard, Fairbairn and Partners, Knightsbridge in 1970 on a number of industrial and commercial projects. Joined the firm in 1971 as project architect for various high rise commercial, residential and institutional projects.

MEMBER OF THE FOLLOWING:
Royal Architectural Institute of Canada
Manitoba Association of Architects
Royal Institute of British Architects

A. G. PRUDEN
188 Queenston St.
Winnipeg 8

