

HENRY KALEN

## SILVER HEIGHTS JUNIOR HIGH SCHOOL

St James, Manitoba

### *Architects*

*Smith, Carter, Searle Associates  
Winnipeg*

*General Contractors  
Arlington Builders Limited*

*General Contractor on addition  
A. W. Peterson Construction Co. Ltd*

The school was built in two stages: the three storey classroom wing and administration area was completed in February 1957; the auditorium wing with special classrooms for home economics, industrial arts, typing, chemistry, and physics was completed in late 1958. The total area of the first stage of the job was 37,985 sq ft with a total cost of \$294,969 or \$7.76 per sq ft. The area of the second stage of the scheme was 19,370 sq ft with a total cost of \$257,694 or \$11.88 per sq ft. This second cost also included the finishing of the lower floor of the classroom wing which is not shown in the second square foot area.

The first stage consisted of twenty academic classrooms situated on two floors, with a full basement which included provisions for additional academic classrooms and shops. The basement area also included a home economics room. The unfinished areas in the basement were completed along with the building of the second stage of the scheme. The administration area consisted of teachers' rooms, nurses' room, principal's office and secretary's room. In the auditorium wing, in addition to the special classrooms, are changing rooms, showers and washrooms for use in conjunction with the auditorium-gymnasium and adjacent playing field.

The classroom wing was constructed in reinforced concrete framing with reinforced concrete spandrel walls. There is a cast-in-place reinforced concrete joist system, and all classroom partitions are load-bearing concrete block, with a

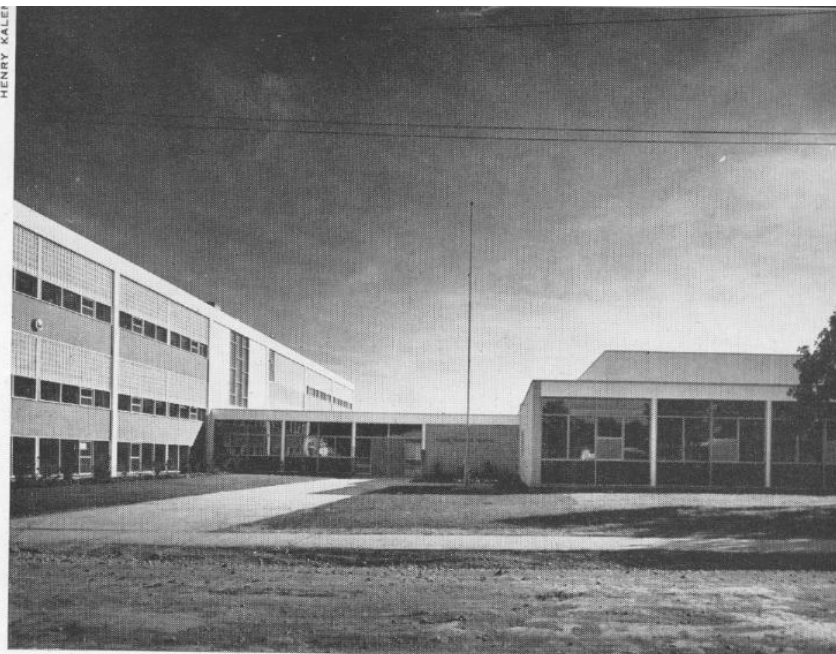
4½" brick veneer on exterior end walls. The auditorium wing is generally of simple steel frame system with short span joists over classroom areas, and long span joists over the auditorium area. The classroom partitions and auditorium walls are again an exposed concrete block construction with a 4½" brick veneer to match the brick used on the first stage of the school. The panels under the windows in the classroom area are painted plywood with an insulated back-up. The upper portion of the auditorium, which projects above the roof of the surrounding special classrooms, has an off-white stucco to contrast with the buff color of the brick veneer and the blue color of the reinforced concrete spandrels.

### *Finishes:*

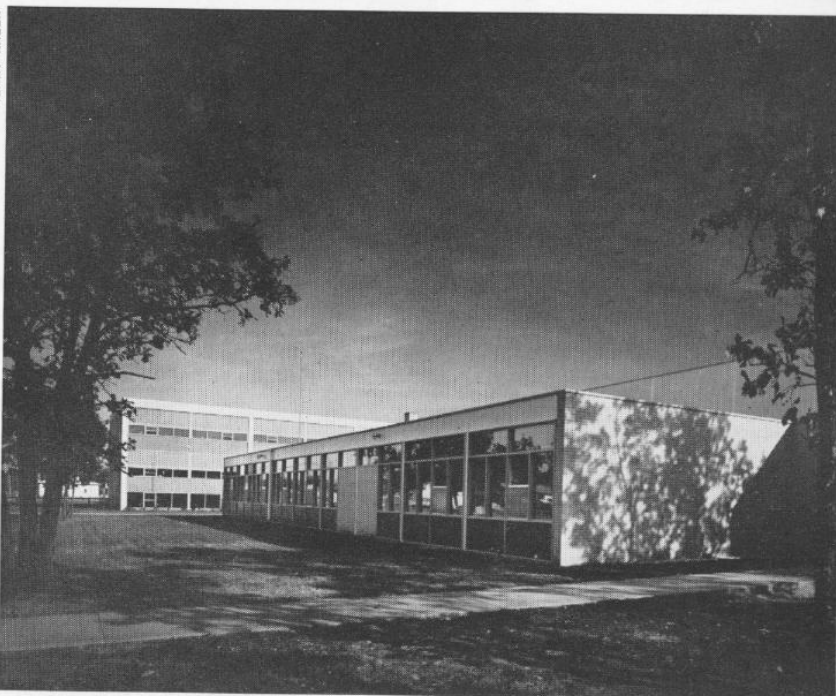
Generally all corridors are finished in terrazzo flooring with exposed painted concrete block walls and fire-proof acoustic tile ceilings. Classrooms and other areas have composition tile flooring with painted concrete block walls and acoustic tile ceilings. The auditorium floor is of granwood with integral markings for basketball, volleyball and badminton, and the walls in this area are painted concrete block, except that the proscenium wall has a contrasting batten wood strip running vertically from floor to ceiling. The auditorium can be divided with a modernfold type door which can be stored along the side walls.

SILVER HEIGHTS JUNIOR HIGH SCHOOL

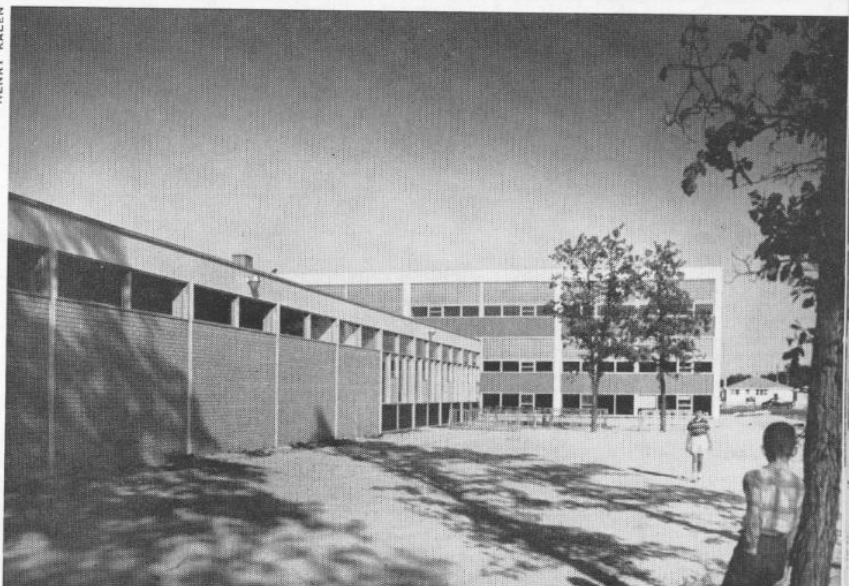
*Main entrance*



*View from the Northwest*



*South elevation*





*Auditorium-Gymnasium*

HENRY KALEN

SILVER HEIGHTS JUNIOR HIGH SCHOOL

