

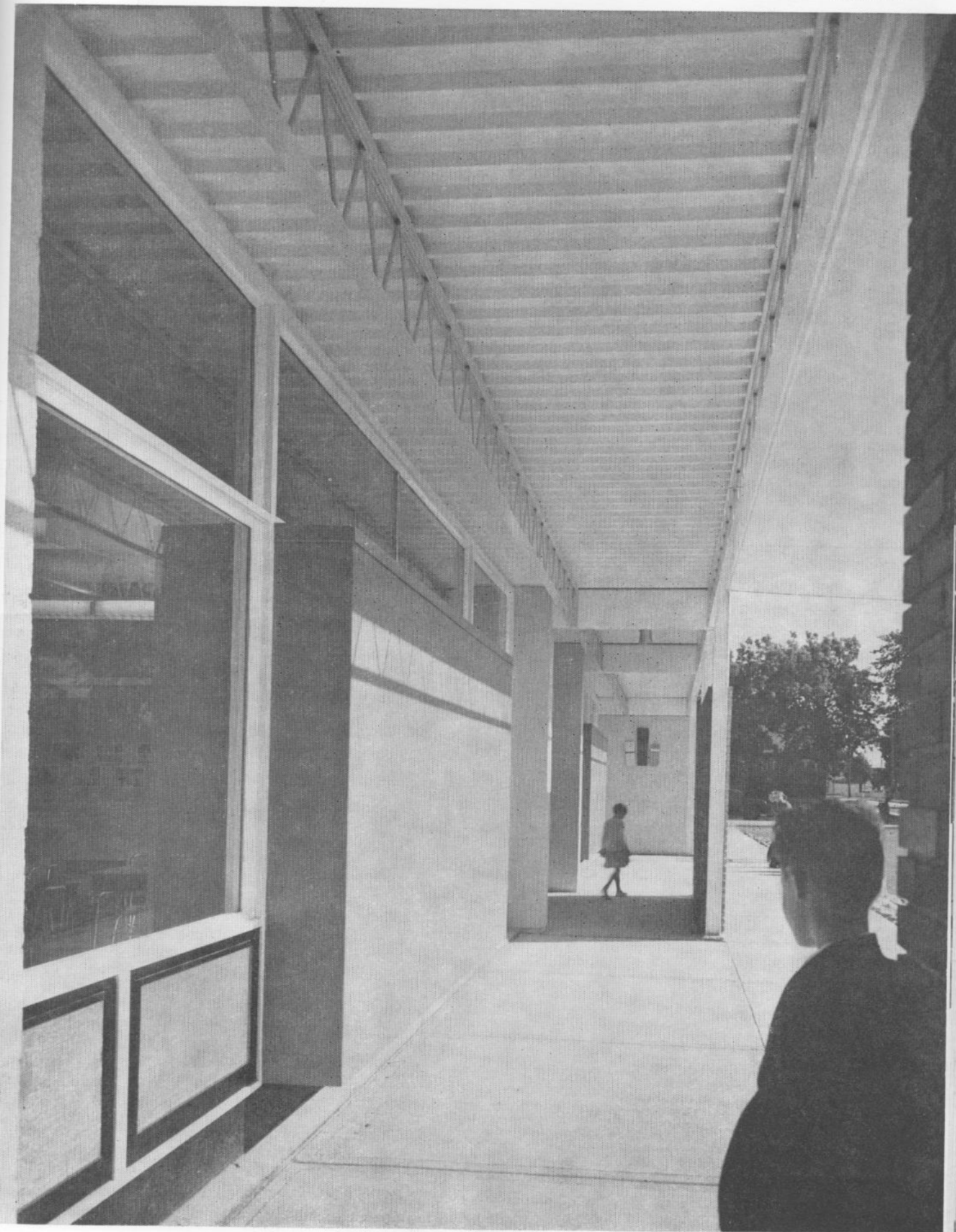
Tache Primary School, Winnipeg

Architects, Libling, Michener & Associates

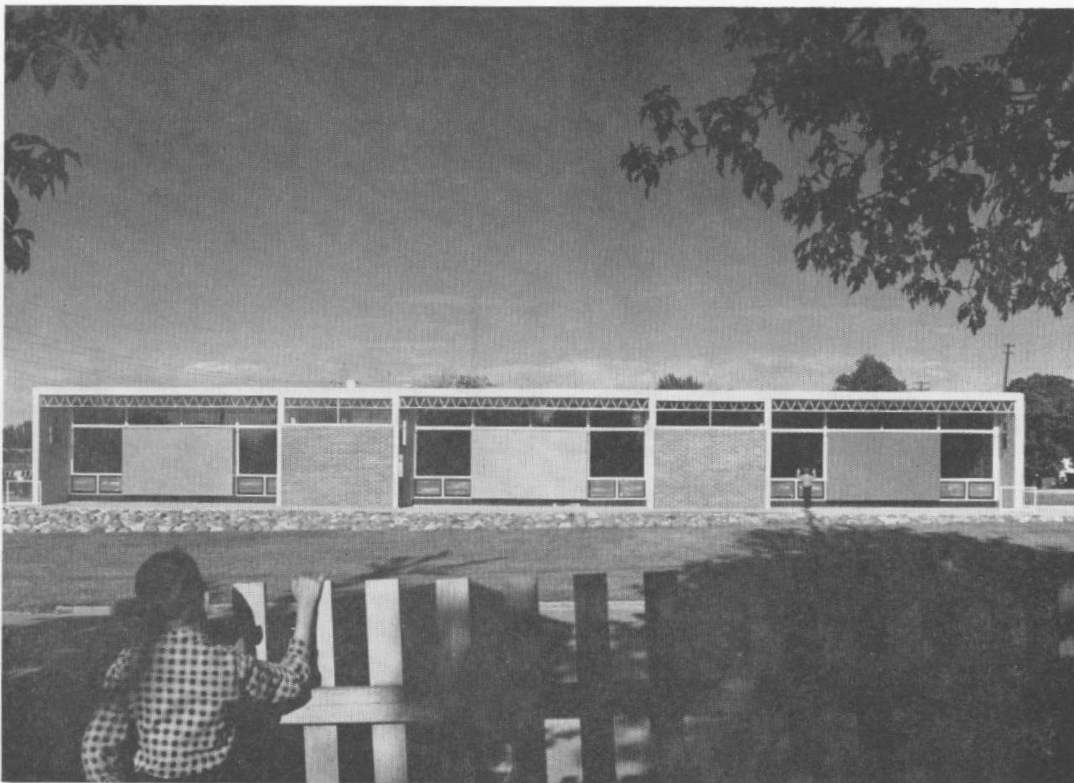
EDUCATIONAL

MENTION

HENRY KALEN



Exterior view covered promenade



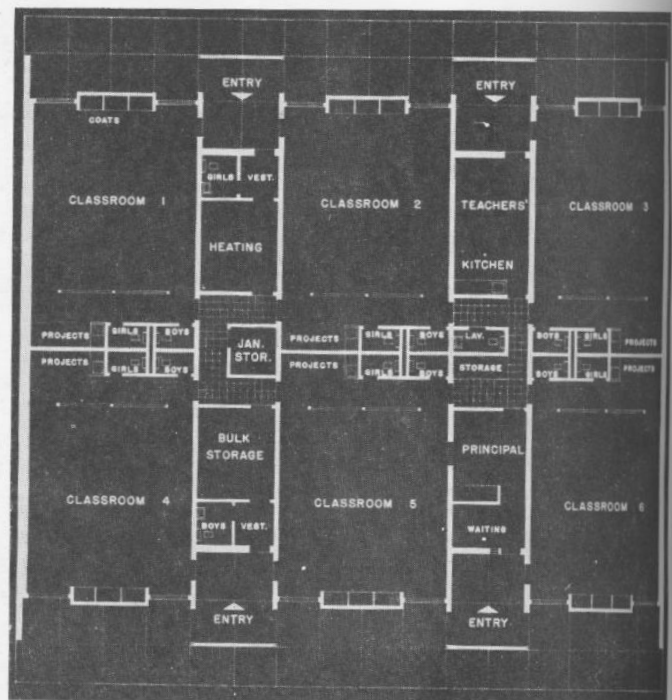
HENRY KALEN

West elevation



HENRY KALEN

Exterior view from South-West

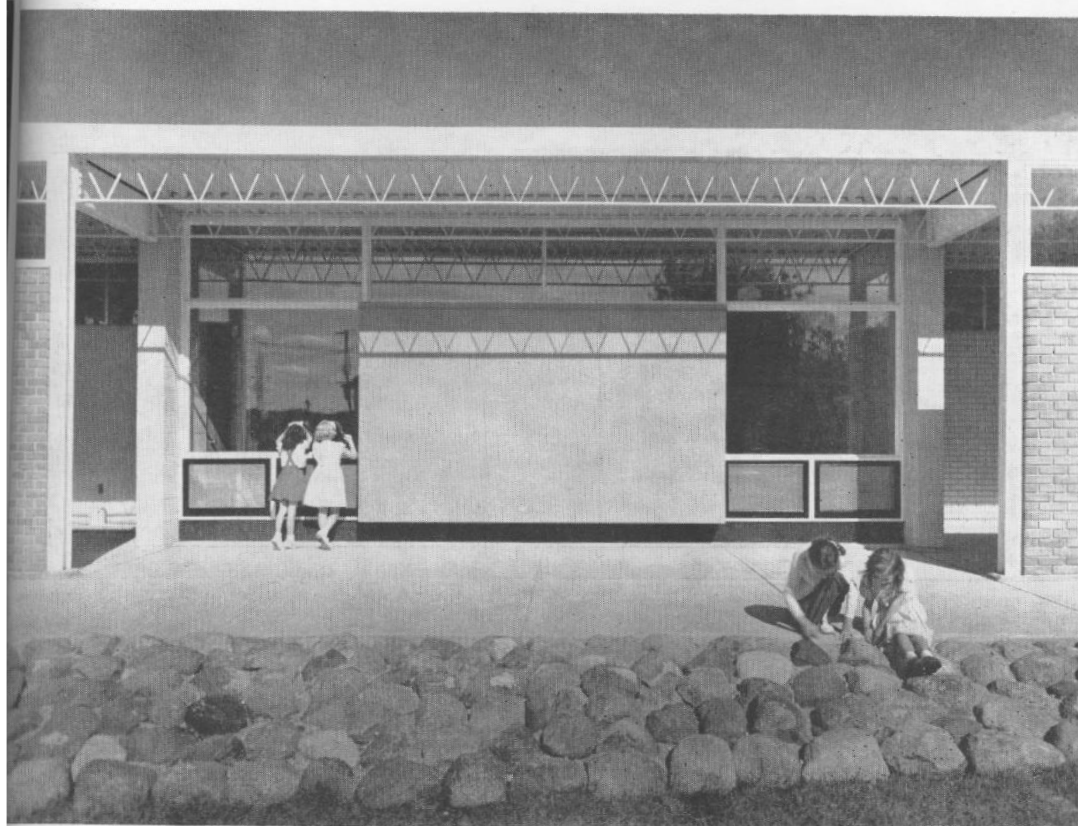


Plan

HENRY KALEN



Interior view of typical classroom

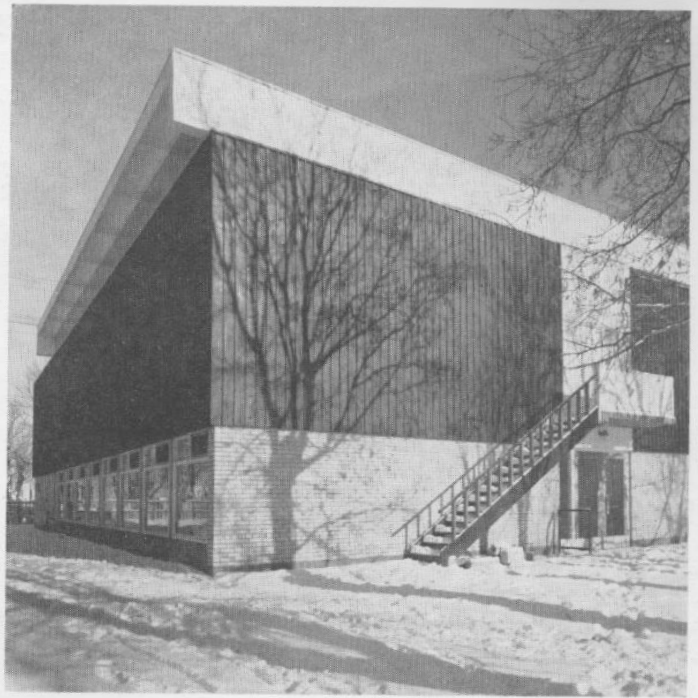
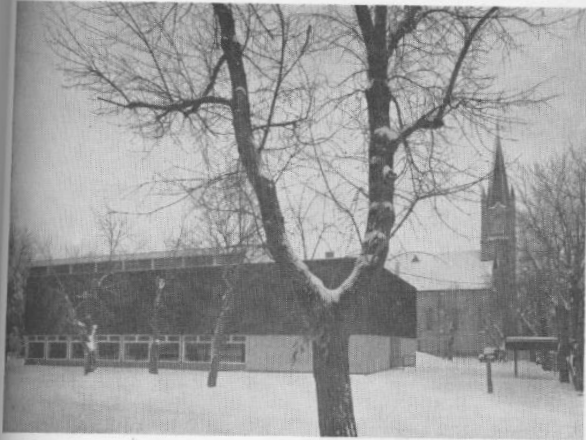


Bay Detail

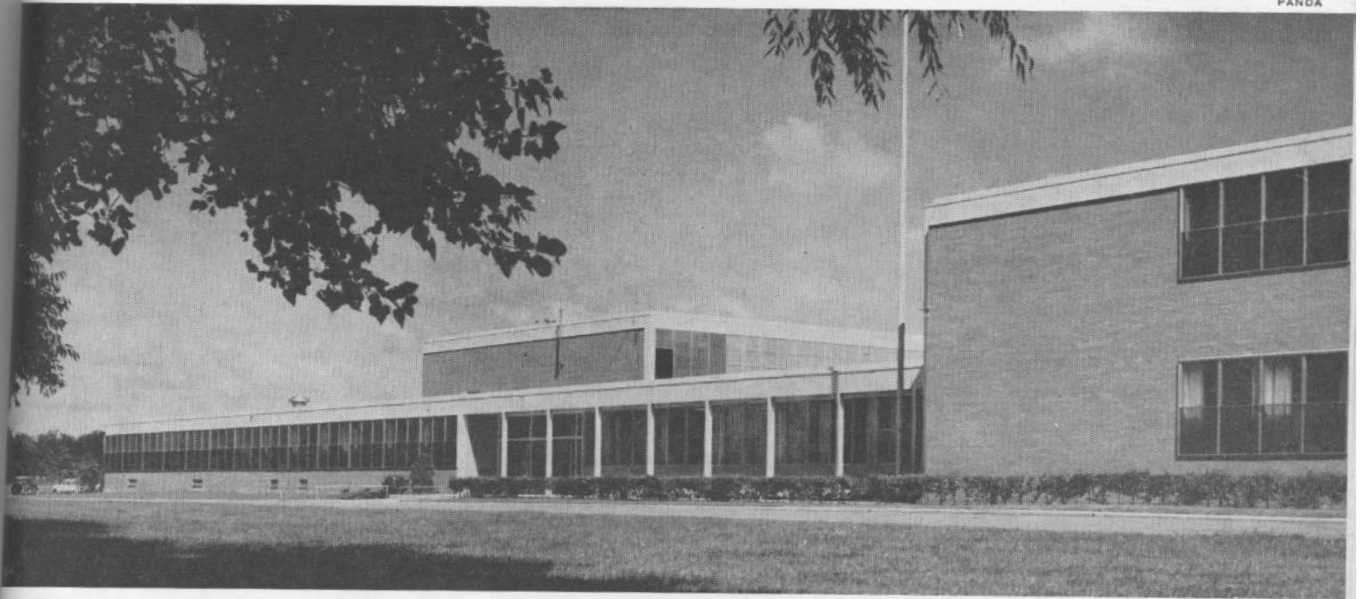
MENTION

St Augustine's School and Parish Hall,
Brandon

Architects, Waisman, Ross & Associates



PANDA



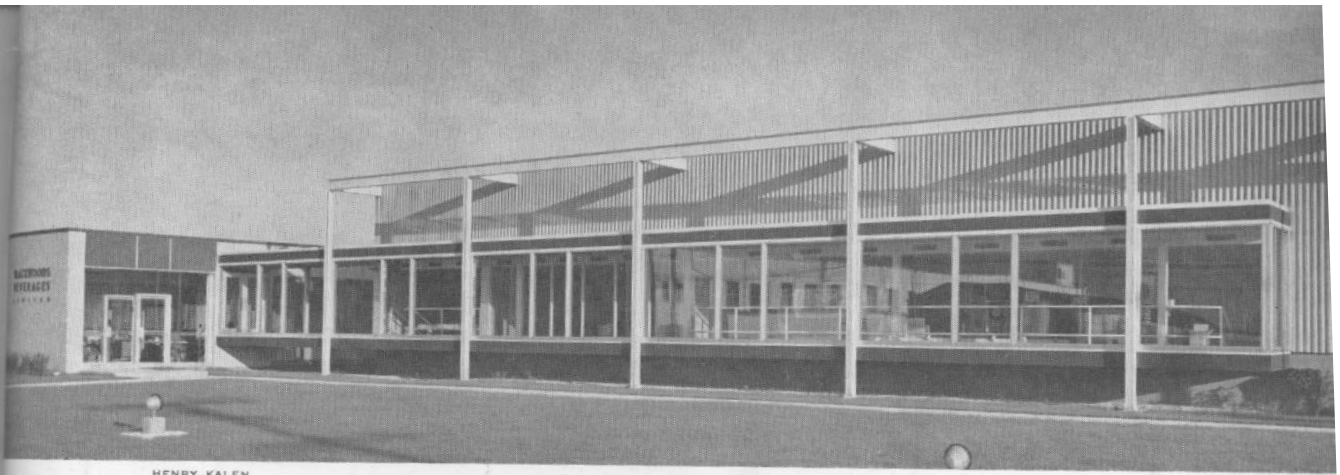
MENTION

Sarnia & District High School

Architects, John B. Parkin Associates

PANDA



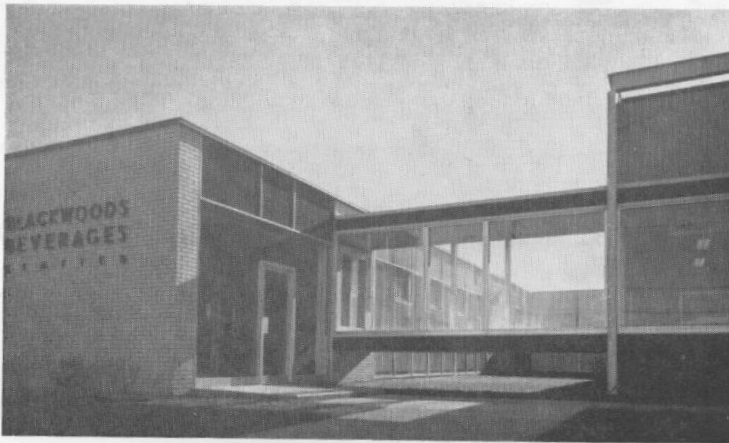


HENRY KALEN

MENTION

Blackwoods Beverages Bottling Plant,
Winnipeg

Architects, Waisman, Ross & Associates

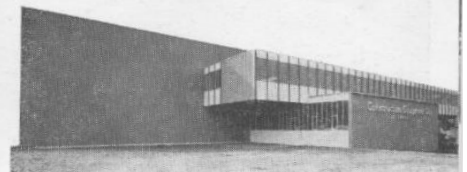


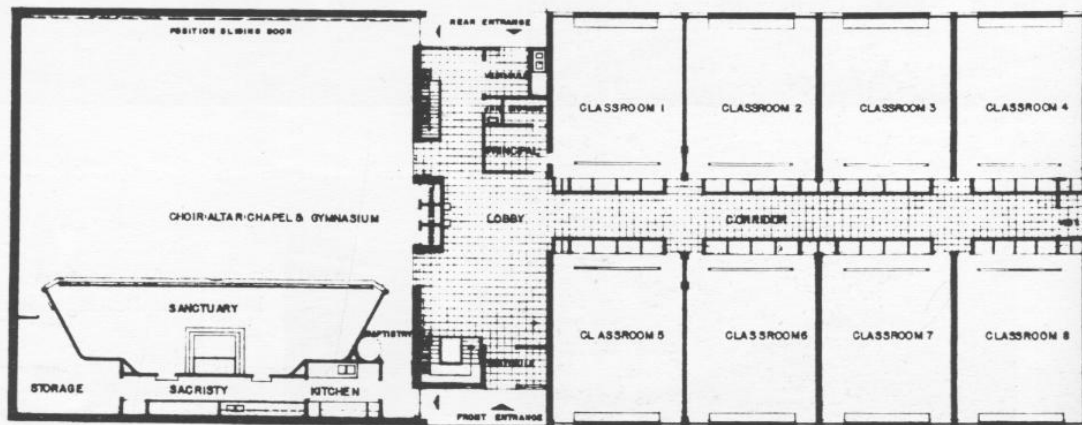
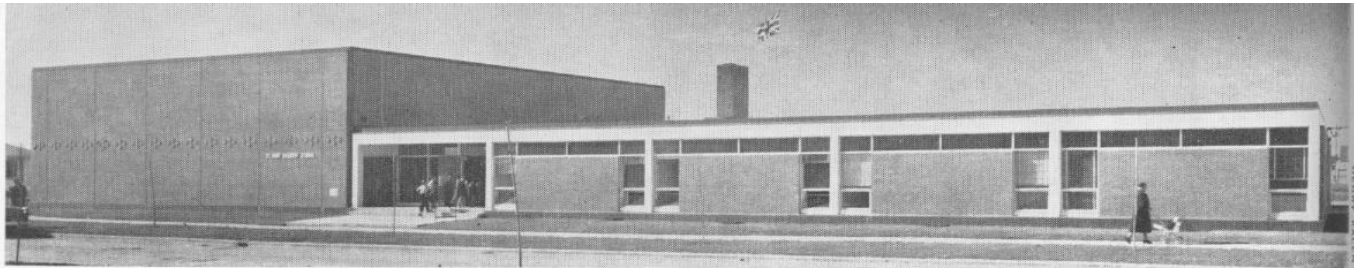
HENRY KALEN

MENTION

Construction Equipment Ltd.,
Vancouver

Architects, Thompson, Berwick & Pratt





ECCLESIASTICAL

MENTION

St. John Brebeuf, Winnipeg

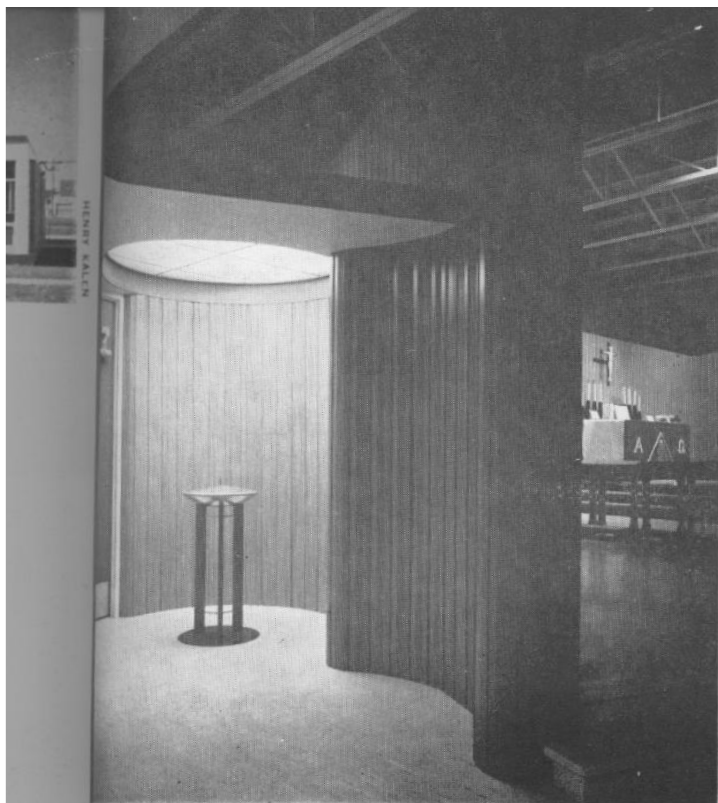
Architects, Libling, Michener & Associates

Interior view of auditorium and chapel

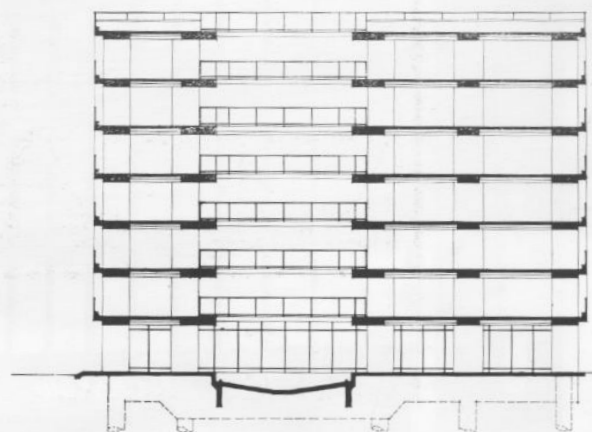


Classroom corridor from entranceway





Full view of Baptismal Font



Section through garage

COMMERCIAL

MENTION

Dundas Square Parking Garage,
Toronto Parking Authority

Architects, John B. Parkin Associates

View from South-East. End wall is of
precast concrete panels. Balcony type cat-
walks connect parking areas at end of
elevator bay.



PANDA

MENTION

Manitoba Teachers' Society
Headquarters, Winnipeg

*Architects,
Libling, Michener & Associates*

West wall

HENRY WALPN

