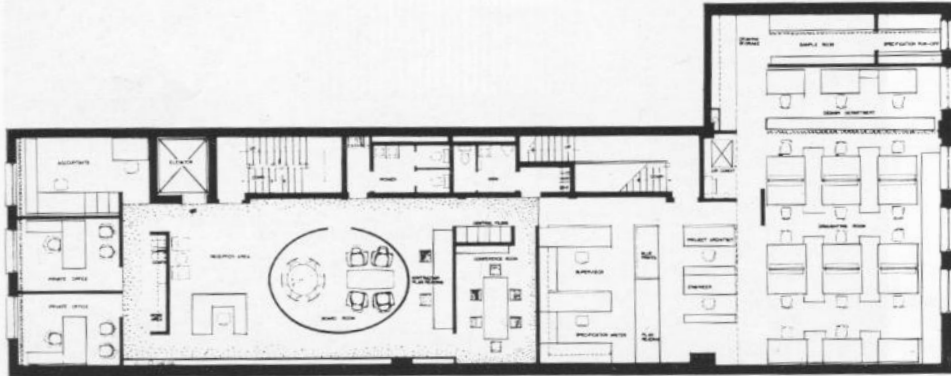


Office for the Architects  
Libling, Michener & Associates  
Winnipeg



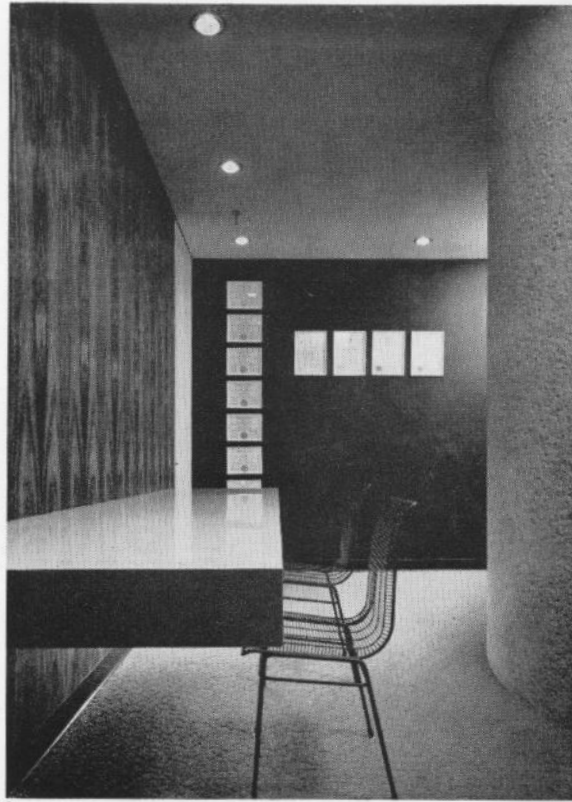
PLAN

1

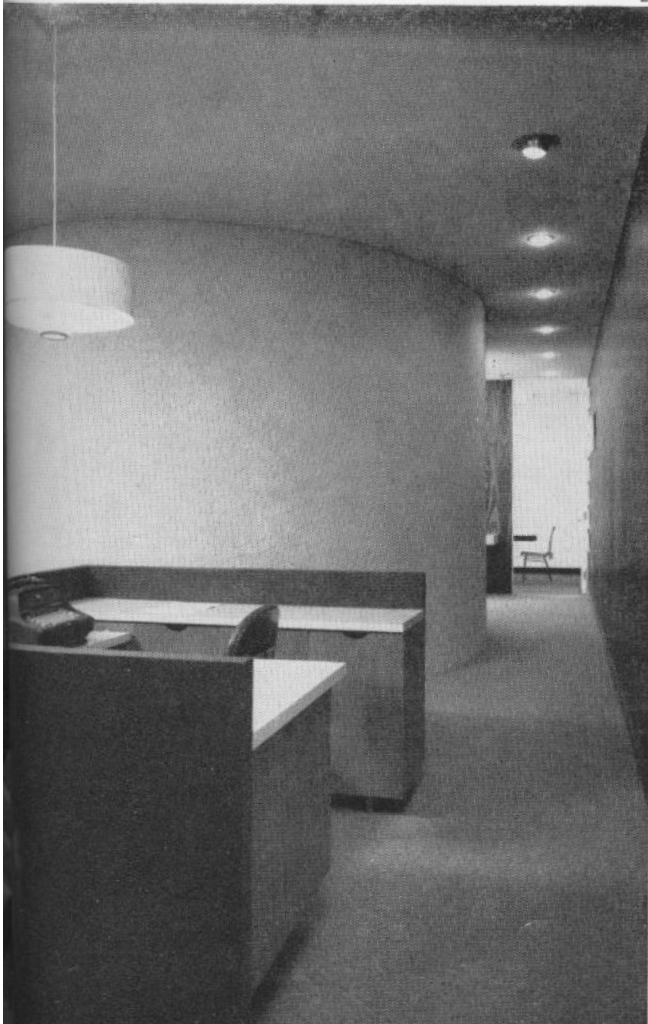


The offices of Libling, Michener & Associates are located on the third floor of an old office building in downtown Winnipeg. The materials used in the renovation were wood, rough plaster, paint and carpeted flooring (in the public areas). The elevator service opens directly into the reception area. The drawing areas are divided by drapery, and painted white with suspended fluorescent lighting.

1. Reception area.
2. Looking towards board room and drafting area from receptionist's desk.
3. Contractor plan reading area.
4. Board room.



3



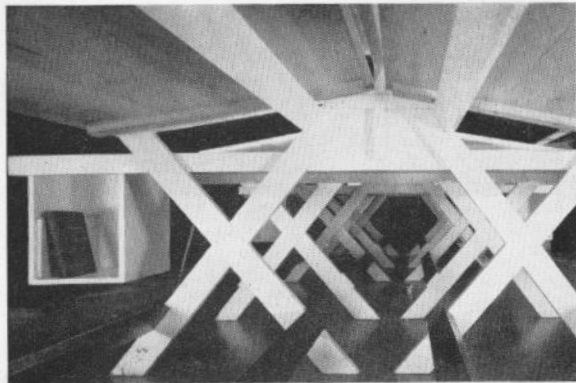
2



4



5



6



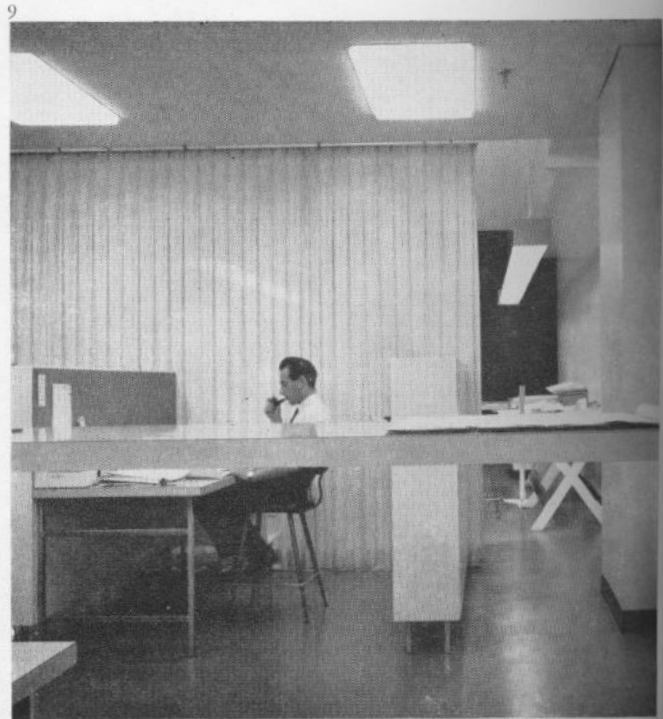
8

5. Private office. 6. Drafting tables.  
7. Conference room. 8. Drafting area.  
9. Plan reading room looking towards  
drafting area.

Photos by Henry Kalen.



7



9