

PRATT LINDGREN SNIDER TOMCEJ AND ASSOCIATE • ARCHITECTS

575 ST. MARY'S ROAD, WINNIPEG 8, MANITOBA

TELEPHONE 233-7186

Arch
NA
749
Py3
A2
1970
c.2

RE: FIRM BACKGROUND AND
EXAMPLES OF PROJECTS.

THE FOLLOWING REPORT IS PRESENTED TO BRIEFLY OUTLINE OUR FIRM'S BACKGROUND
AND GIVE SOME EXAMPLES OF RECENT PROJECTS.

A. FIRM BACKGROUND:

THE FIRM STARTED PRACTICE IN 1954 AS PRATT LINDGREN AND ASSOCIATES
AND CARRIED OUT NUMEROUS AND VARIED PROJECTS BETWEEN THAT DATE AND
1964, WHEN OUR NEW FIRM PRATT LINDGREN SNIDER TOMCEJ AND ASSOCIATE
WAS FORMED.

THE FOUR PARTNERS AND OUR ASSOCIATE, M.E. JOHNSON ARE GRADUATES OF
THE UNIVERSITY OF MANITOBA.

PERSONAL HISTORY OF OFFICERS:

KENNETH REGINALD DIXON PRATT -

BORN RUSSELL, MANITOBA MARCH 13TH, 1926. GRADUATED NORWOOD COLLEGIATE
1943. SERVED IN CANADIAN ARMY JUNE, 1943 TO OCTOBER, 1945. ATTENDED
ARMY UNIVERSITY COURSE AT MCGILL, 1943. IN CANADA AND OVERSEAS 1944-45.
ENTERED ARCHITECTURE AT UNIVERSITY OF MANITOBA, 1945. GRADUATED, 1949.
M.A.A. SCHOLARSHIP 3RD YEAR. WORKED WITH MOODY AND MOORE, ARCHITECTS,
MAY, 1949 TO DECEMBER, 1953. LICENSED ARCHITECT, 1951. BEGAN PRACTICE
WITH MR. LINDGREN, JANUARY, 1954. PART TIME DESIGN INSTRUCTOR UNIVERSITY
OF MANITOBA, 1955 AND 1957 TERMS. MEMBER OF MANITOBA ASSOCIATION OF
ARCHITECTS COUNCIL, 1953-1955. VICE-PRESIDENT OF ST. BONIFACE ROTARY
CLUB, 1959-1960. DIRECTOR OF ST. VITAL Y.M.C.A. 1961-1962. PRESIDENT
OF ST. BONIFACE ROTARY CLUB, 1960-1961. MEMBER DIOCESE OF RUPERTSLAND
EXTENSION COMMITTEE 1962 - PRESENT. MEMBER REGISTRATION BOARD MANITOBA
ASSOCIATION OF ARCHITECTS, 1964 - PRESENT. DIRECTOR - ST. BONIFACE
ROTARY 1965-1966. MEMBER - DIOCESE AND ADMINISTRATION COMMITTEE, 1965.
CHAIRMAN, M.A.A.-BUILDERS' EXCHANGE COMMITTEE 1967 - PRESENT. COMMITTEE
CHAIRMAN COMMISSION ON RENEWAL, 1968. MEMBER COUNCIL OF EDUCATIONAL
FACILITY PLANNERS.

- CONTINUED -

THE UNIVERSITY OF MANITOBA LIBRARIES

PRATT LINDGREN SNIDER TOMCEJ AND ASSOCIATE • ARCHITECTS

575 ST. MARY'S ROAD, WINNIPEG 8, MANITOBA

TELEPHONE 233-7186

RE: FIRM BACKGROUND AND
EXAMPLES OF PROJECTS,
PAGE 2.

A. PERSONAL HISTORY OF OFFICERS: - CONTINUED

STEWART ERIC LINDGREN -

BORN WINNIPEG, MANITOBA MARCH 11TH, 1920. ELEMENTARY AND HIGH SCHOOL EDUCATION IN VANCOUVER. SERVED IN CANADIAN ARMY SEPTEMBER, 1939 TO FEBRUARY, 1946. SERVED OVERSEAS DECEMBER, 1939 TO MARCH, 1945 WITH ROYAL CANADIAN ENGINEERS. ENTERED ARCHITECTURE AT UNIVERSITY OF MANITOBA 1947. GRADUATED 1951. WORKED WITH MANITOBA PROVINCIAL ARCHITECT, 1951-1953. LICENSED ARCHITECT, 1953. BEGAN PRACTICE WITH MR. PRATT, JANUARY, 1954. VICE-PRESIDENT ST. BONIFACE KIWANIS, 1959-1960. PRESIDENT ST. BONIFACE KIWANIS, 1960-1961. VICE-PRESIDENT MANITOBA ASSOCIATION OF ARCHITECTS, 1960-1961. PAST DIRECTOR OF BARTON LAUNDRY LTD., MANITOBA. PRESIDENT MANITOBA ASSOCIATION OF ARCHITECTS, 1962. MANITOBA ASSOCIATION OF ARCHITECTS COUNCIL, 1963. MANITOBA ASSOCIATION OF ARCHITECTS USAGE COMMITTEE, 1964 - PRESENT. CHAIRMAN OF MANITOBA ASSOCIATION OF ARCHITECTS FEE COMMITTEE, 1967 - PRESENT. FELLOW R.A.I.C. - 1967. SHRINER, 1966 - PRESENT.

KENNETH ROBERT SNIDER -

BORN WINNIPEG, MANITOBA, AUGUST 9TH, 1928. ENTERED THE SCHOOL OF ARCHITECTURE IN 1947 AND GRADUATED IN 1951. MASTER OF ARCHITECTURE DEGREE IN 1953. AFTER GRADUATION WORKED FOR WINNIPEG ARCHITECTS, MOODY AND MOORE FOR APPROXIMATELY 18 MONTHS. JOINED WAISMAN AND ROSS, WINNIPEG ARCHITECTS IN 1954, AND WAS LICENSED TO PRACTICE ARCHITECTURE IN 1955. BECAME ASSOCIATE PARTNER IN 1959 AND RESIGNED IN 1964. ESTABLISHED HIS OWN PRACTICE AND ON JANUARY 1ST, 1965, MERGED WITH THE ARCHITECTURAL FIRM OF PRATT LINDGREN AND ASSOCIATES TO CREATE THE FIRM PRATT LINDGREN SNIDER TOMCEJ AND ASSOCIATE, ARCHITECTS. MEMBER OF THE BOARD OF STEWARDS, FORT GARRY UNITED CHURCH, 1962-1965. PART TIME DESIGN INSTRUCTOR UNIVERSITY OF MANITOBA, 1964-1965. CHAIRMAN OF THE MANITOBA ASSOCIATION OF ARCHITECTURE SEMINAR 1966. MEMBER OF THE ADVISORY CIVIC DESIGN COMMITTEE FOR THE METROPOLITAN CORPORATION OF GREATER WINNIPEG. MEMBER OF THE SELECTION COMMITTEE FOR THE CANADIAN DESIGN '67 PROGRAMME. AS ASSOCIATE PARTNER WITH WAISMAN AND ROSS ARCHITECTS, WAS RESPONSIBLE FOR THE MUNICIPAL OFFICE BUILDING AT THOMPSON, MANITOBA, (MASSEY SILVER MEDAL, 1961), BANK BUILDING FOR THE TORONTO-DOMINION BANK AT TRANSCONA AND WINNIPEG. RECEIVED INTERNATIONAL STAINLESS STEEL AWARD FOR THE DESIGN OF THE STAINLESS STEEL CURTAIN WALL CLADDING FOR THE THOMPSON MUNICIPAL OFFICE BUILDING AND THE THOMPSON HOSPITAL. IN 1964, WON THE NATIONAL ARCHITECTURAL COMPETITION FOR THE STUDENT'S UNION BUILDING, UNIVERSITY OF BRITISH COLUMBIA, AND AS A RESULT, PRATT LINDGREN SNIDER TOMCEJ AND ASSOCIATE WERE APPOINTED AS ARCHITECTS FOR THE PROJECT. CHAIRMAN - ADVISORY CIVIC DESIGN COMMITTEE, 1969.

- CONTINUED -

PRATT LINDGREN SNIDER TOMCEJ AND ASSOCIATE • ARCHITECTS

575 ST. MARY'S ROAD. WINNIPEG 8, MANITOBA

TELEPHONE 233-7186

RE: FIRM BACKGROUND AND
EXAMPLES OF PROJECTS,
PAGE 3.

A. PERSONAL HISTORY OF OFFICERS: - CONTINUED

ALEXANDER TOMCEJ -

BORN CZECHOSLOVAKIA, MARCH 25TH, 1927.

ELEMENTARY AND HIGH SCHOOL EDUCATION IN WINNIPEG.

GRADUATED UNIVERSITY OF MANITOBA - 1950.

WORKED WITH GREEN BLANKSTEIN RUSSELL AND ASSOCIATES, ARCHITECTS AND
CONSULTING ENGINEERS, MAY, 1950 TO JUNE, 1963.

LICENSED ARCHITECT - JANUARY, 1954.

JOINED FIRM OF PRATT & LINDGREN, JUNE, 1963 AND FORMED PARTNERSHIP WITH
PRATT LINDGREN AND SNIDER, JANUARY, 1965.

PROJECTS ASSOCIATED WITH WHEN EMPLOYED BY GREEN BLANKSTEIN RUSSELL:

WINNIPEG GENERAL POST OFFICE

LIBRARY BUILDING - UNIVERSITY OF MANITOBA

STUDENT'S UNION BUILDING - UNIVERSITY OF MANITOBA

NURSE'S RESIDENCE - BRANDON GENERAL HOSPITAL

POLO PARK SHOPPING CENTRE

MEMBER OF MANITOBA ASSOCIATION OF ARCHITECTS COUNCIL, 1966-1969.

OUR FIRM AT PRESENT CONSISTS OF A TOTAL OF 13 PERSONNEL, 4 PARTNERS,
3 GRADUATE ARCHITECTS, 4 DRAFTSMEN, ELECTRICAL DESIGNER, SECRETARY.

WE ENGAGE CONSULTANTS FOR ENGINEERING AND OTHER SERVICES /ND HAVE EN-
GAGED W.L. WARDROP, CROSIER GREENBERG AND PARTNERS, SCOUTEN MITCHELL
SIGURDSON, REID, CROWTHER AND PARTNERS, K.A. HAND ON RECENT PROJECTS.

B. EXAMPLES OF PROJECTS:

SOME EXAMPLES OF OUR PROJECTS FOR REFERENCE ARE AS FOLLOWS:-

1. STUDENT'S UNION BUILDING AT THE UNIVERSITY OF BRITISH COLUMBIA -
(PRINTS 1-4 INCLUSIVE)

THIS PROJECT WAS AWARDED ON THE BASIS OF A NATION-WIDE ARCHITECTURAL
COMPETITION AND WAS COMPLETED LAST FALL AT A COST OF APPROXIMATELY
\$4,500,000.00. PLANS WITH PHOTOGRAPHS SHOW EXTERIOR AND INTERIOR
VIEWS. THE BUILDING CONTAINS MANY SPECIALIZED AREAS SUCH AS FOOD
HANDLING SERVICES, THEATRE, RADIO STATION, BANK, SHOPS ETC., IN ADDI-
TION TO STUDENT ACTIVITY AND SOCIAL AREAS.

- CONTINUED -

RE: FIRM BACKGROUND AND
EXAMPLES OF PROJECTS,
PAGE 4.

B. EXAMPLES OF PROJECTS: - CONTINUED

2. TUXEDO-SHAFTESBURY HIGH SCHOOL: (PRINT 5)
THIS RECENTLY COMPLETED SCHOOL CONTAINS A LECTURE THEATRE, AUDITORIUM-GYMNASIUM, RESOURCE CENTRE, SCIENCE COMPLEX, OPEN AREA ENGLISH DEPARTMENT AND OTHER CLASSROOM FACILITIES.
3. CONSERVATORY FOR ASSINIBOINE PARK: (PRINT 6)
THE CONSERVATORY WAS RECENTLY TENDERED (\$570,000.00) AND WILL HAVE A RECEPTION AND DISPLAY AREA RELATED TO THE ENTRANCE. A TEA HOUSE (DESIGNED EARLIER BY OUR FIRM) IS CONNECTED TO THE CONSERVATORY. THE NEW CONSERVATORY WILL BE BUILT OVER THE EXISTING TO SAVE ALL EXISTING PALMS, ETC. A STEPPED AREA HAS BEEN USED FOR GROUP DISCUSSION DURING CHILDREN'S TOURS OF THE CONSERVATORY.
4. ASSINIBOIA CHRISTIAN CENTRE: (PRINTS 7 AND 8)
THIS PROJECT IS A JOINT ROMAN-CATHOLIC-ANGLICAN MULTI-USE CHURCH RECENTLY COMPLETED AT A CONSTRUCTION COST OF \$500,000.00. THE SLOPED NAVE IS DESIGNED FOR MULTI-USE AND THE SANCTUARY HAS REMOVABLE FURNISHINGS FOR USE AS STAGE. THE BUILDING HAS GYMNASIUM, TEEN-LOUNGE, AND NUMEROUS ACTIVITY ROOMS. THE JOINT USE AND MULTI-PURPOSE FEATURES ARE WORKING EXTREMELY WELL IN THIS UNIQUE CHURCH BUILDING.
5. RESEARCH BUILDINGS: (PRINT 9)
WE DESIGNED THE CEREAL BREEDING BUILDING FOR THE DEPARTMENT OF AGRICULTURE GOVERNMENT OF CANADA AT THE UNIVERSITY OF MANITOBA. THIS PROJECT INCLUDED LABORATORY FACILITIES, GROWTH CHAMBERS ETC. - REQUIRING SPECIAL CLIMATIC CONTROL AND SPECIAL DESIGN CONSIDERATIONS.

THE FIRM ALSO PROVIDED SERVICES FOR A SPACE DETECTION AND TRACKING BUILDING AND A TRAINING BUILDING FOR STUDY OF CF5 AIRCRAFT COMPONENTS AT COLD LAKE, ALBERTA, FOR THE DEPARTMENT OF NATIONAL DEFENCE.
6. HEDGES JUNIOR HIGH SCHOOL: (PRINTS 10 AND 11)
THIS PROJECT HAS 24 CLASSROOMS, SCIENCE AREAS, LECTURE THEATRE, RESOURCES CENTRE, ART ROOM, SHOP AND HOME ECONOMICS AREAS, GYMNASIUM ETC. THE SCHOOL HAS CLASSROOMS IN GROUPS OF FOUR WITH FLEXIBLE ARRANGEMENT FOR VARIED GROUPINGS. ALL MAJOR COMPONENTS ARE EXPENDABLE IN THE FUTURE, E.G. CLASSROOMS AND MULTI-PURPOSE LECTURE THEATRE, RESOURCES CENTRE, GYMNASIUM, SHOPS AND HOME ECONOMICS.

- CONTINUED -

RE: FIRM BACKGROUND AND
EXAMPLES OF PROJECTS,
PAGE 5.

8. EXAMPLES OF PROJECTS: - CONTINUED

7. BUCHANAN ELEMENTARY SCHOOL: (PRINT 12)

THIS IS THE SECOND ADDITION TO A ONE STOREY SCHOOL. INTERESTING FEATURES INCLUDE A NINE CLASSROOM AREA GROUPED ABOUT A RESOURCE CENTRE, A TWO STATION GYMNASIUM, A MUSIC ROOM WITH STEPPED FLOOR AND ADJOINING PROJECTOR ROOM IN FORMER GYMNASIUM, AND SPECIALLY DESIGNED KINDERGARTEN ROOMS SEPARATED FROM OTHER SCHOOL ACTIVITIES.

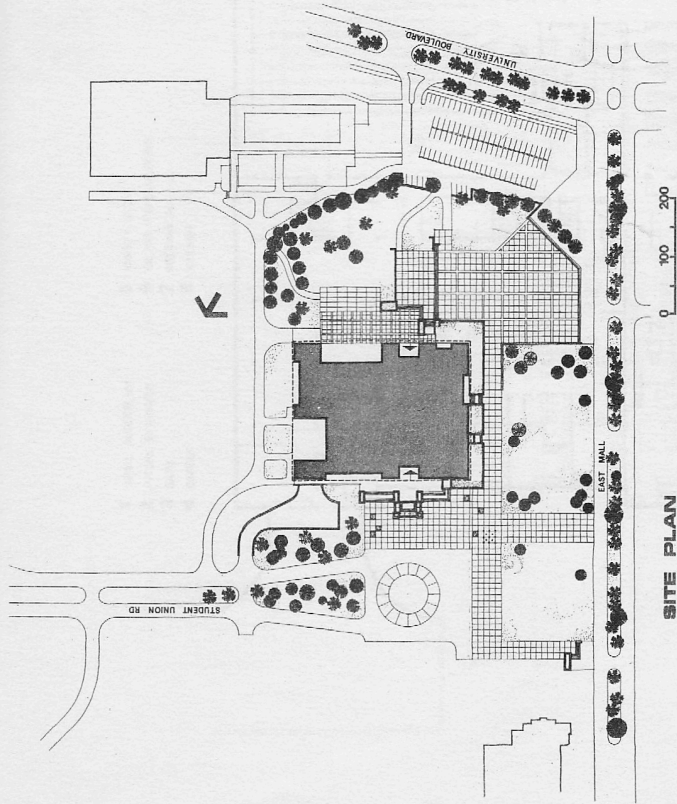
8. ST. GEORGE'S ANGLICAN CHURCH: - TRANSCONA (PRINTS 13 AND 14)

THIS IS AN EXAMPLE OF A SMALL PARISH CHURCH ON A VERY LIMITED BUDGET. IT PROVIDES FACILITIES FOR BOTH CHURCH AND CHRISTIAN EDUCATION USAGE. THE CHURCH IS DESIGNED SO THAT EXPANSION OF THESE FACILITIES CAN EASILY BE DONE AS THE CONGREGATION GROWS. THE BUILDING IS PROPOSED AS A DRAFT SLAB STRUCTURE, SIMPLE WOOD FRAME WORK AND GLULAM WOOD DECK ROOF CONSTRUCTION. THE EXISTING CHURCH BELL (WHICH IS THE FIRST BELL BROUGHT INTO TRANSCONA) HAS BEEN INCORPORATED INTO THE DESIGN. THE EXTERIOR OF THE BUILDING IS PROPOSED AS CEDAR SHAKES AND PEBBLE DASHED STUCCO.

9. ST. AVILA ELEMENTARY SCHOOL: (BROCHURE)

SUMMARY:

OUR FIRM HAS DESIGNED A VARIETY OF PROJECTS, MANY OF A COMPLEX NATURE, INCLUDING HOSPITALS, (STEINBACH; WINKLER; PORTAGE LA PRAIRIE; MINNEODSA: GILLAM), INDUSTRIAL PLANTS (DIESEL GENERATING PLANT - THE PAS); CHEMICAL PLANTS FOR WINNIPEG AND TORONTO; McPHILLIPS STREET PUMPING STATION, WINNIPEG; WATER TREATMENT PLANT, SELKIRK; CAR CLINIC STATION FOR IMPERIAL OIL, WINNIPEG, BANKS, LIBRARIES, SENIOR CITIZENS HOSTELS, PERSONAL CARE HOMES, MUNICIPAL OFFICES, RECREATION BUILDINGS, SCHOOLS, TELEPHONE EXCHANGE, AND OTHER BUILDINGS OF SPECIAL DESIGN



SITE PLAN

View From North

View From East Mall

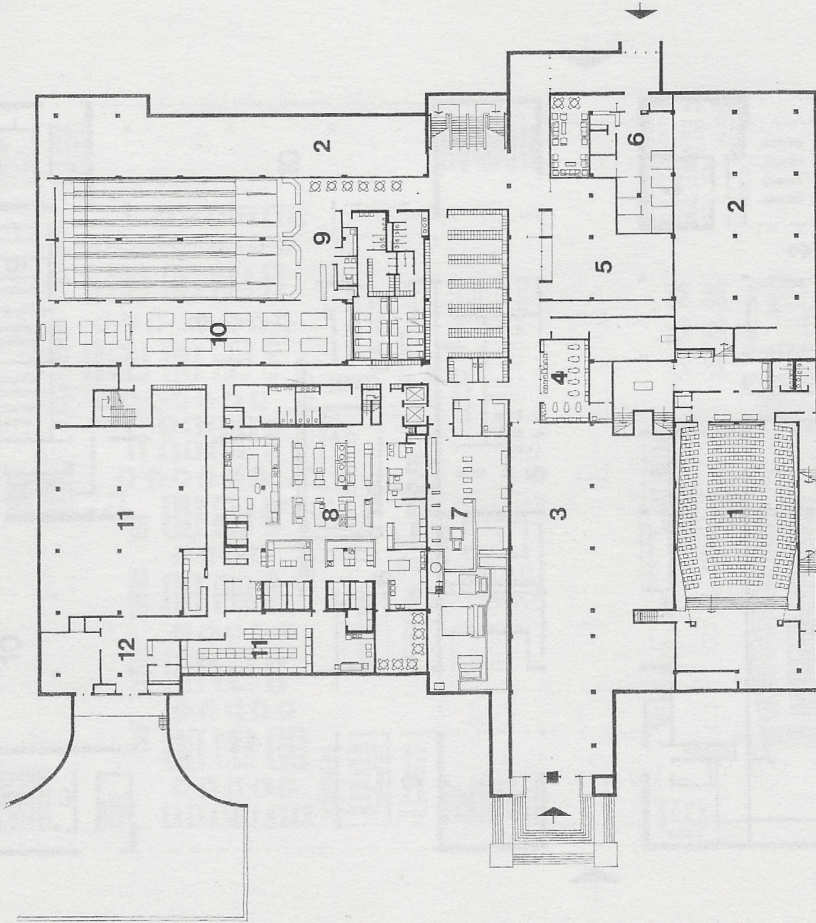
STUDENT UNION BUILDING

UNIVERSITY OF BRITISH COLUMBIA
Architects

PRATT LINDGREN SNIDER TOMCEJ & ASSOCIATE
WINNIPEG
Associate Architects

TOBY RUSSELL BUCKWELL & ASSOCIATES
VANCOUVER
BRITISH COLUMBIA.

- 1 SMALL AUDITORIUM
- 2 FUTURE EXPANSION
- 3 BANK
- 4 BARBER
- 5 VARSITY STORE
- 6 OUTING HEADQUARTERS
- 7 MECHANICAL
- 8 KITCHEN
- 9 BOWLING
- 10 BILLIARDS
- 11 STORAGE
- 12 RECEIVING



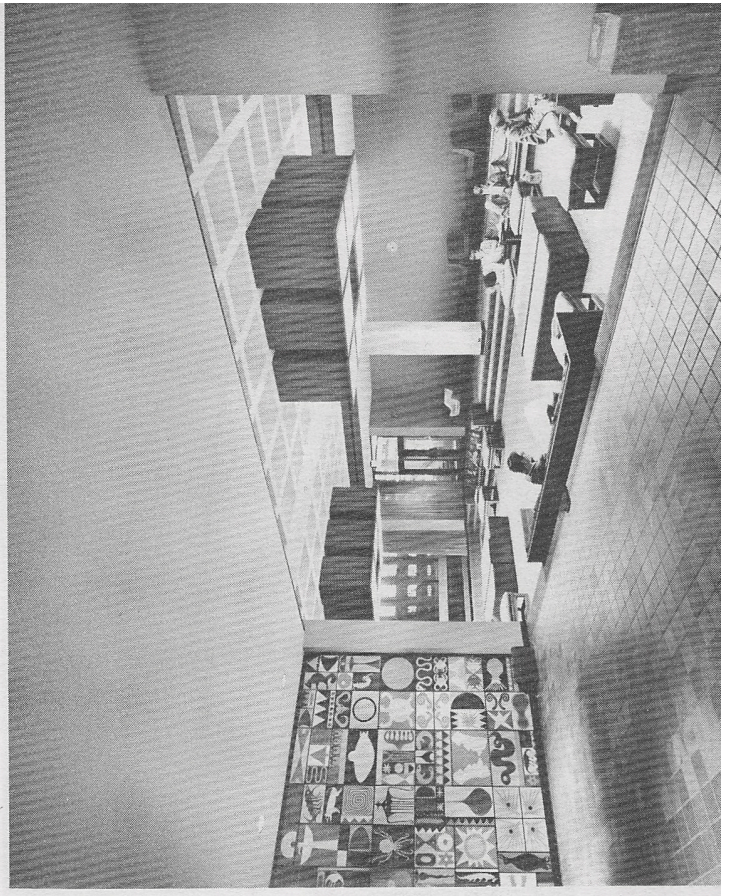
0 25 50
LOWER GROUND FLOOR

2.



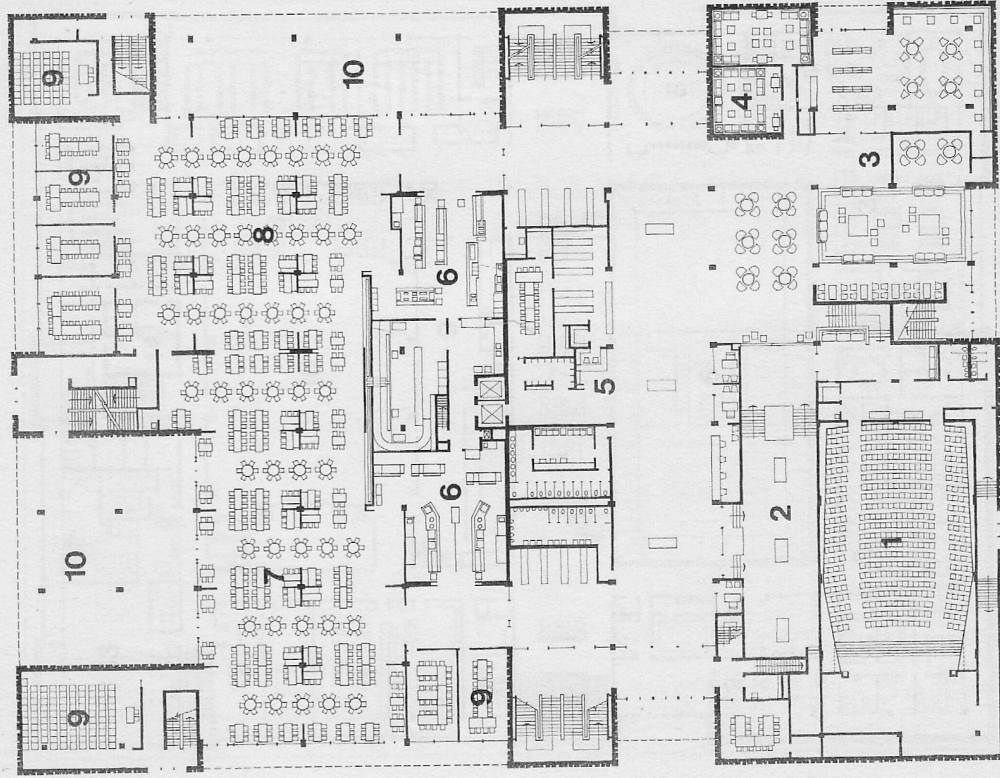
View of Small Auditorium

View of Main Lounge



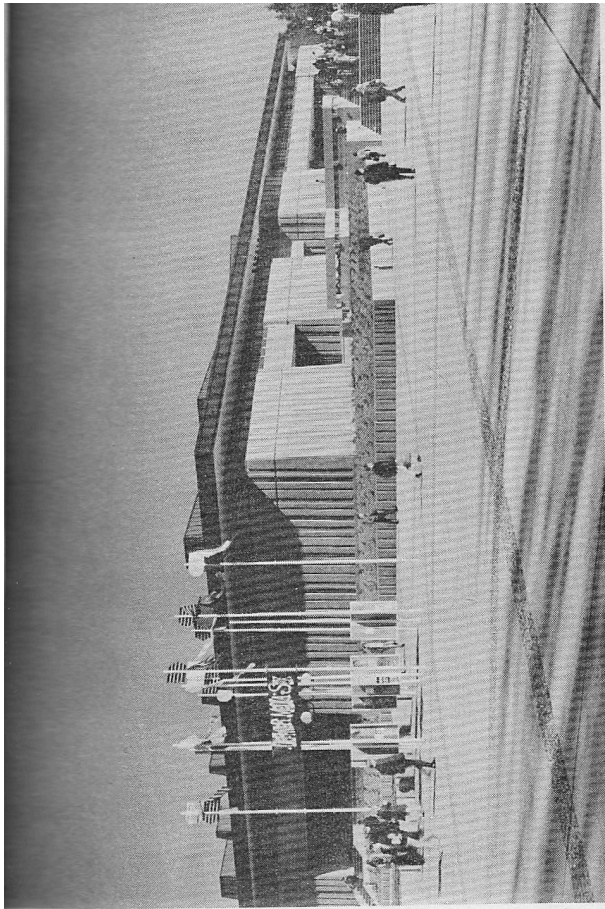
- 1 SMALL AUDITORIUM
- 2 ART GALLERY
- 3 LOUNGES
- 4 MUSIC LOUNGES
- 5 INFORMATION

- 6 SERVERIES
- 7 CAFETERIA
- 8 SNACK BAR
- 9 MEETING - DINING
- 10 EXPANSION

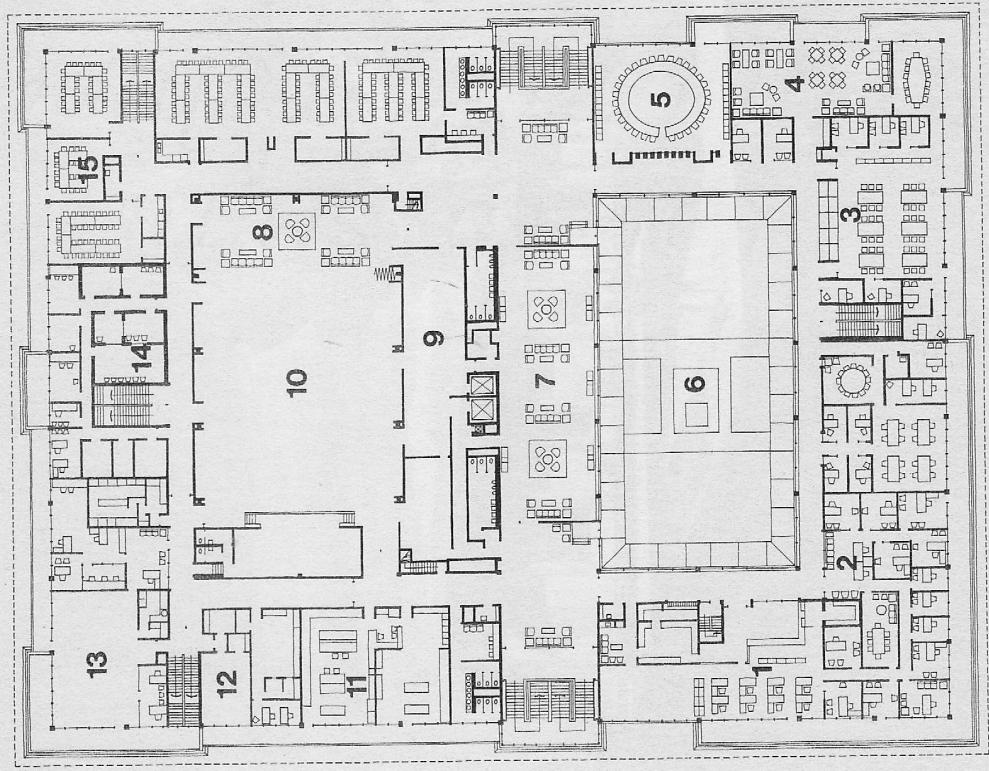


GROUND FLOOR

3.

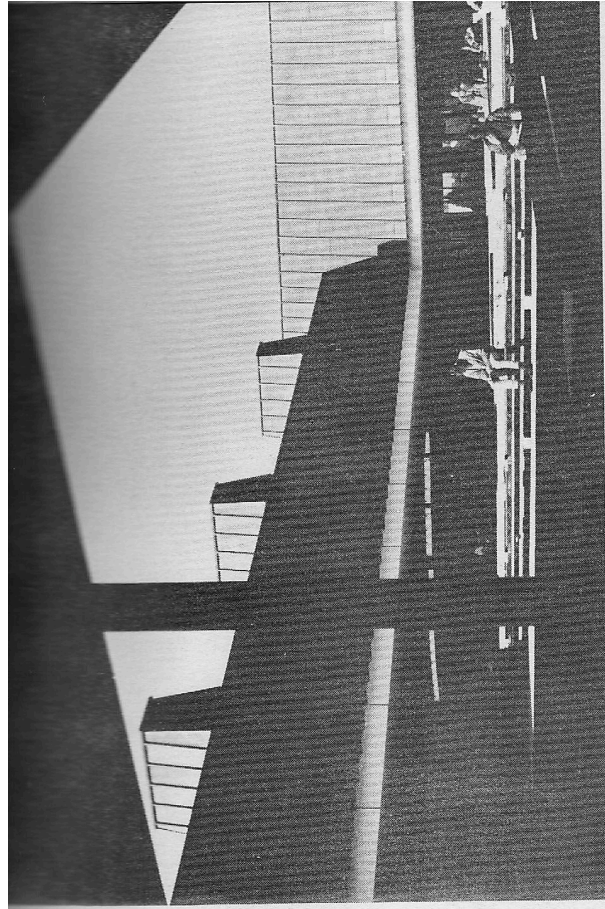


- 1 BUSINESS
- 2 STUDENT EXECUTIVE
- 3 CLUBS
- 4 LOUNGE
- 5 COUNCIL CHAMBER
- 6 OPEN COURTYARD
- 7 PARTY ROOM
- 8 PARTY ROOM EXTENSION
- 9 SERVRY
- 10 BALLROOM
- 11 GRAPHICS
- 12 PHOTOGRAPHY
- 13 PUBLICATIONS
- 14 RADIO
- 15 MEETING ROOMS



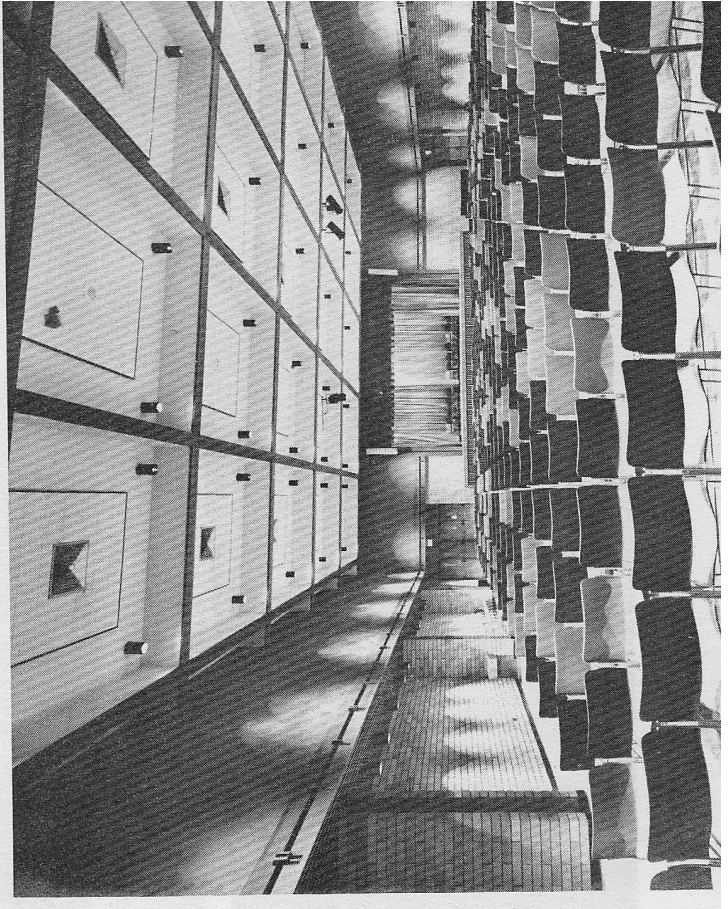
SECOND FLOOR

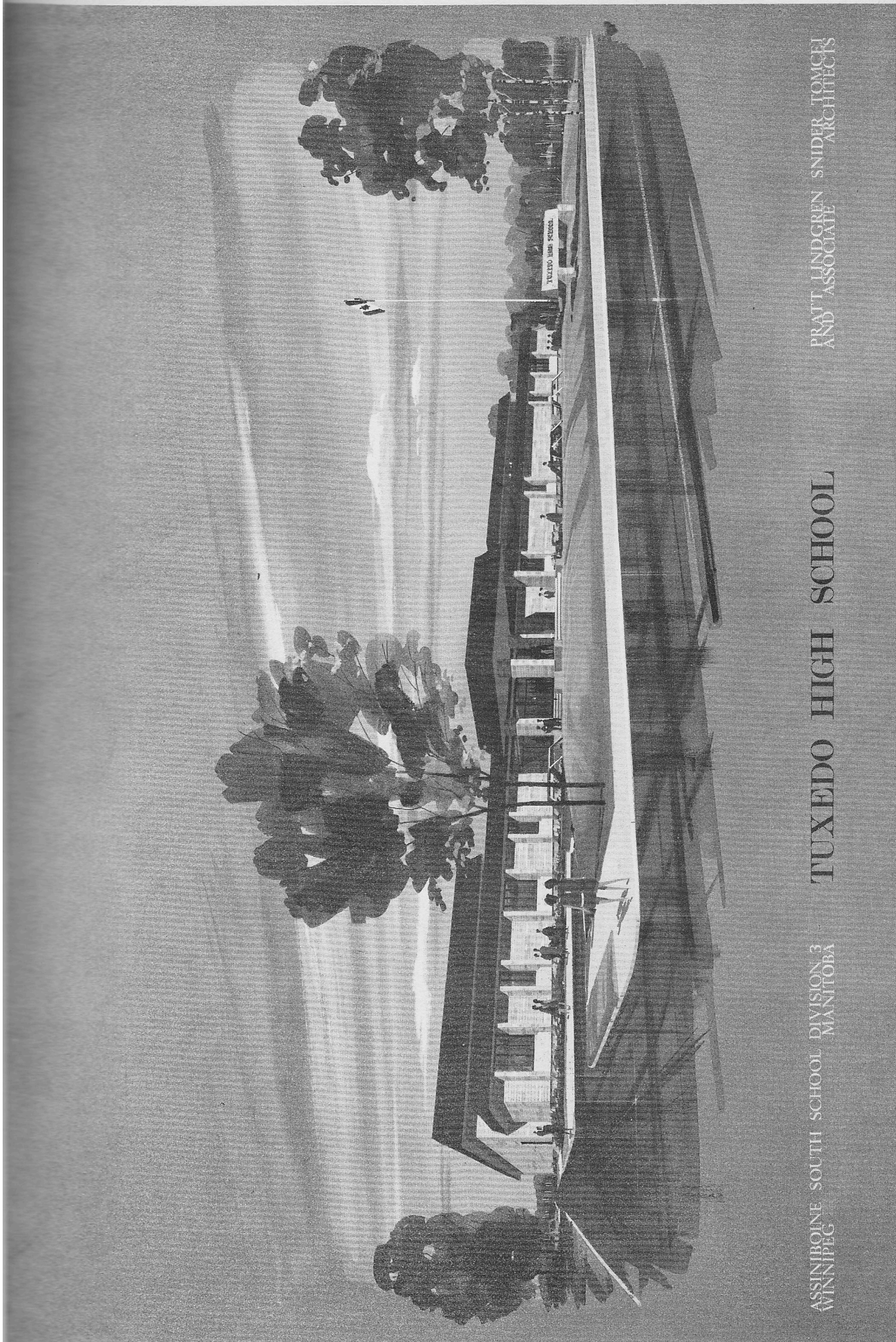
4.



View of Second Floor Open Courtyard

View of Ballroom

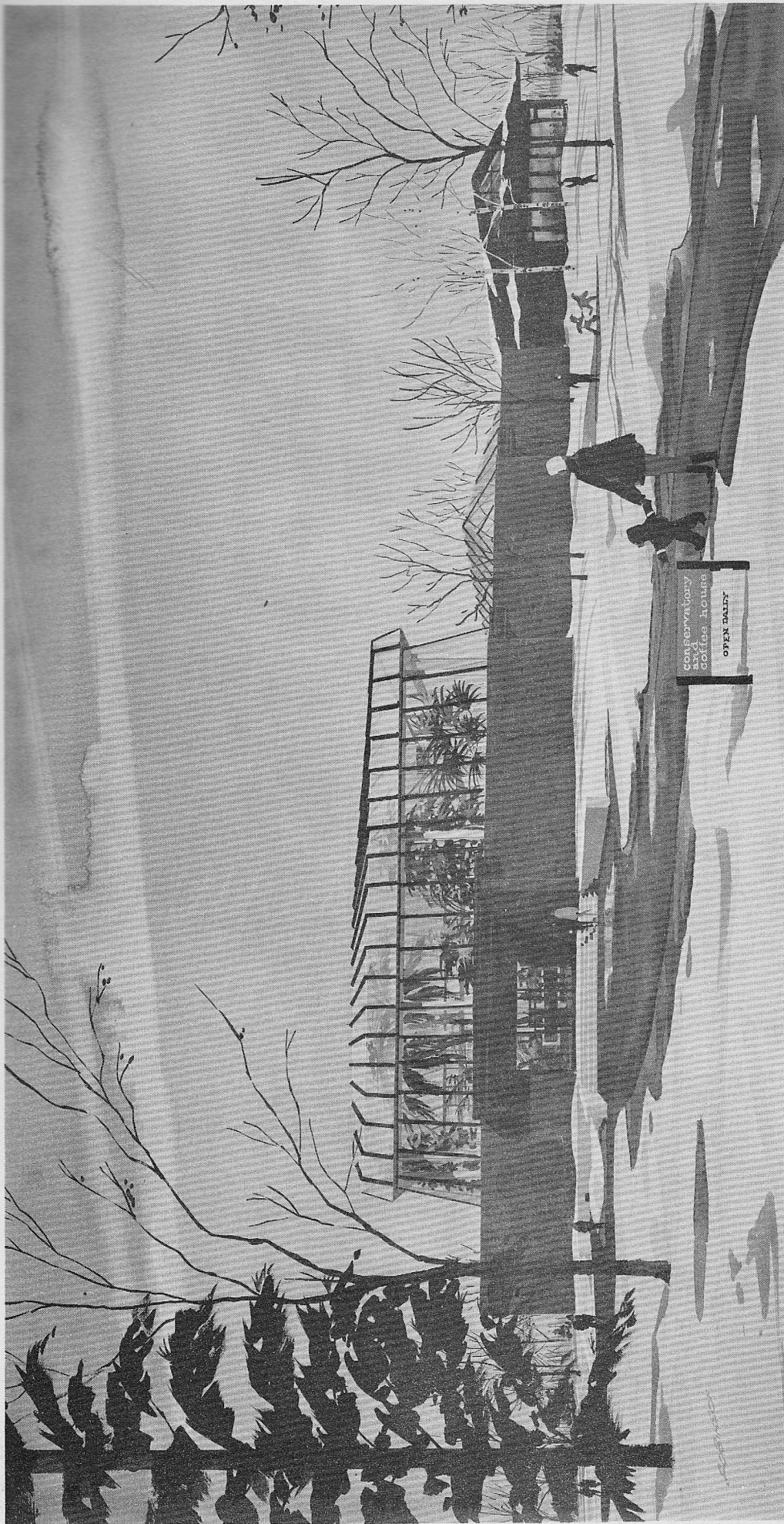




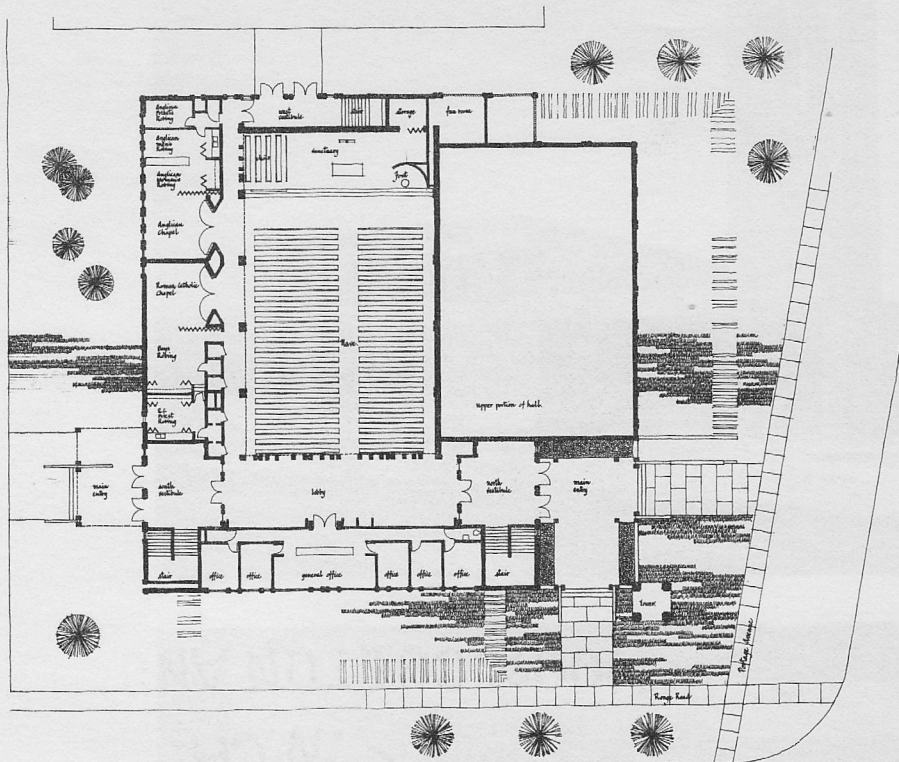
ASSINIBOINE SOUTH SCHOOL DIVISION 3
WINNIPEG MANITOBA

TUXEDO HIGH SCHOOL

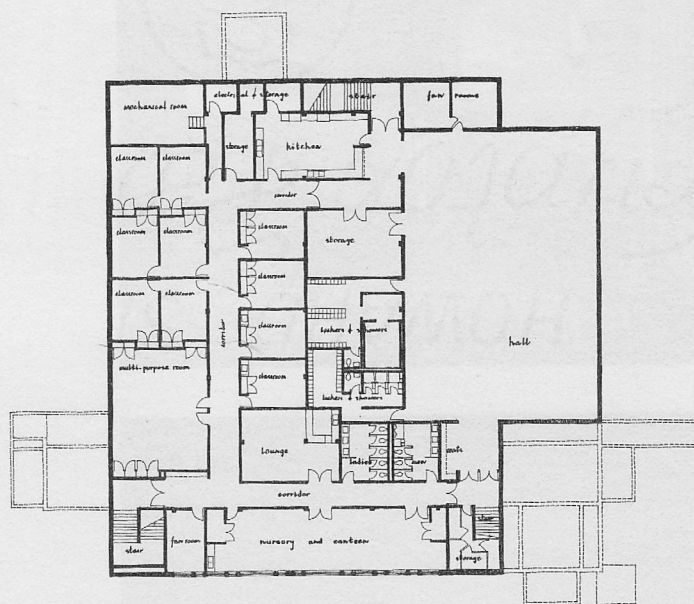
PRATT LINDGREN SNIDER TOMCEI
AND ASSOCIATE ARCHITECTS



GROUND FLOOR PLAN



BASEMENT FLOOR PLAN



ASSINIBOIA

JOHN XXIII
WINNIPEG 22

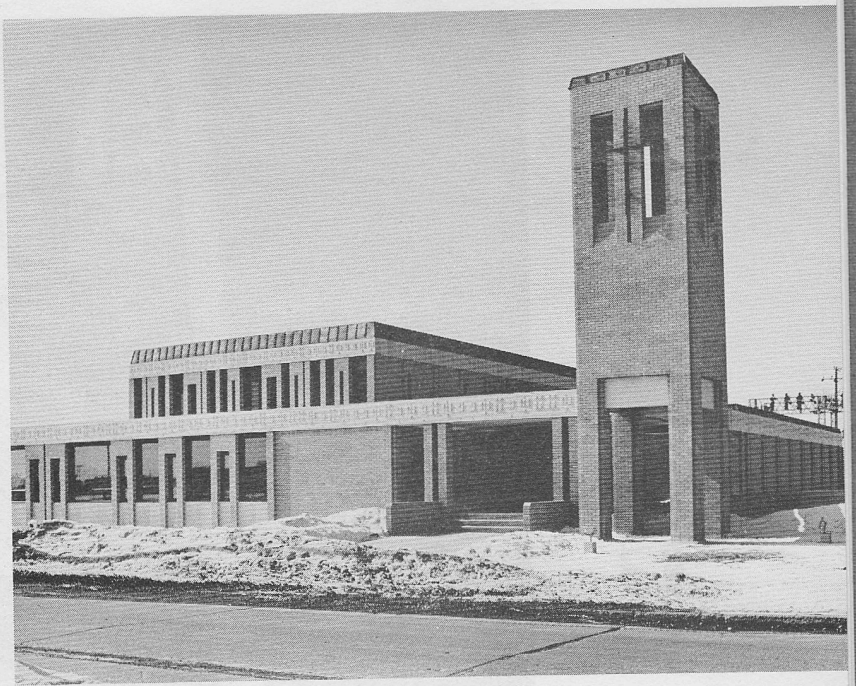
CHRISTIAN

CENTRE

ST. CHAD'S
MANITOBA

PRATT LINDGREN SNIDER TOMCEJ & ASSOCIATE
WINNIPEG 8
MANITOBA

View From Portage Ave. - East



View of Nave



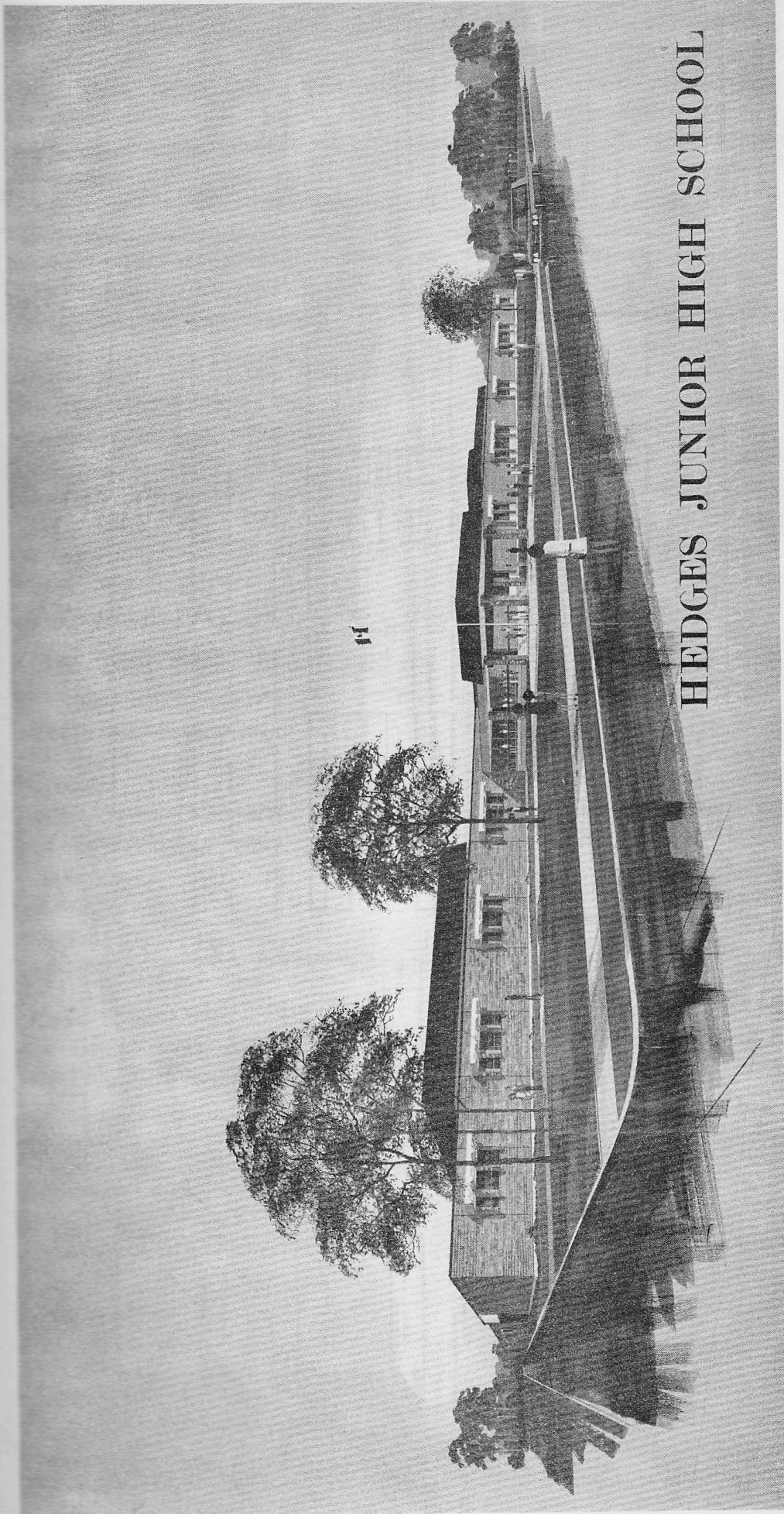
View From Rouge Rd. - South



CANADA DEPARTMENT
OF AGRICULTURE
RESEARCH STATION
WINNIPEG, MANITOBA

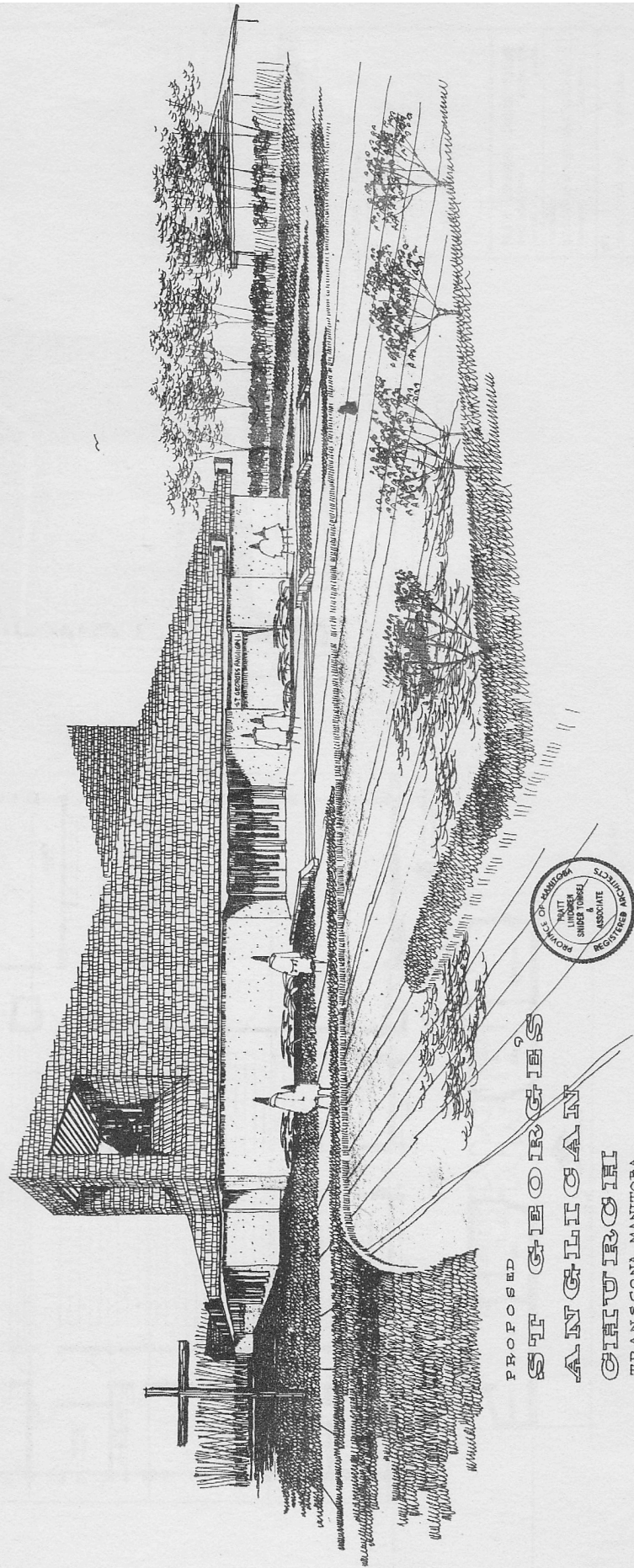
PRATT LINDGREN SNIDER TOMCEJ
& ASSOCIATE ARCHITECTS





HEDGES JUNIOR HIGH SCHOOL





PROPOSED
ST GEORGE'S
ANGLO-CATHOLIC
CHURCH
TRANSCONA MANITOBA

